



VICTORIA BOLT

POWERED BY
exp™ UK

@ victoria.bolt@exp.uk.com

🌐 victoriabolt.exp.uk.com

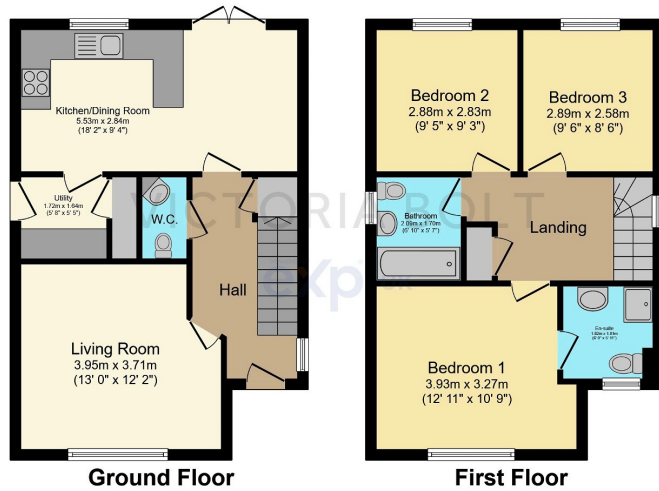
📞 07415 758 109

Drake Avenue, Ivybridge

Guide Price £340,000

3 3 1





Total floor area 88.5 sq.m. (952 sq.ft.) approx
 This plan is for illustration purposes only and may not be representative of the property. Plan not to scale. Powered by PropertyBox



This detached family home was built on the Western side of Ivybridge just over five years ago. The accommodation comprises; a lounge, kitchen/diner, downstairs WC, utility room, three spacious bedrooms, master ensuite and a family bathroom. Outside, there is a good-sized, level rear garden, a garage with an electric door and driveway parking. The property is a short walk from the 'outstanding' Woodlands Park primary school. To arrange a viewing, please quote VB0375.

