

Quixote Crescent, Rochester, Kent, ME2 3XD

£325,000

3 1 2



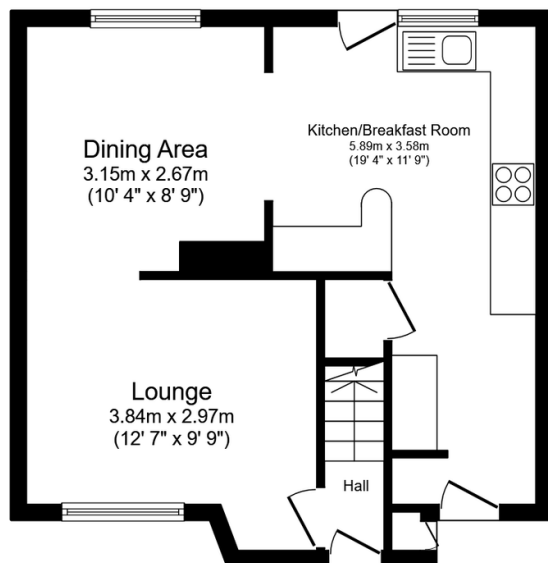
Guide Price £325,000

An ideal family home offering a great amount of both living and bedroom space. Built in cupboards, large garden and a bathroom with additional shower are some of the features that will grab your attention with this 3 bedroom home in the popular Frindsbury location. Call and arrange your viewing today!

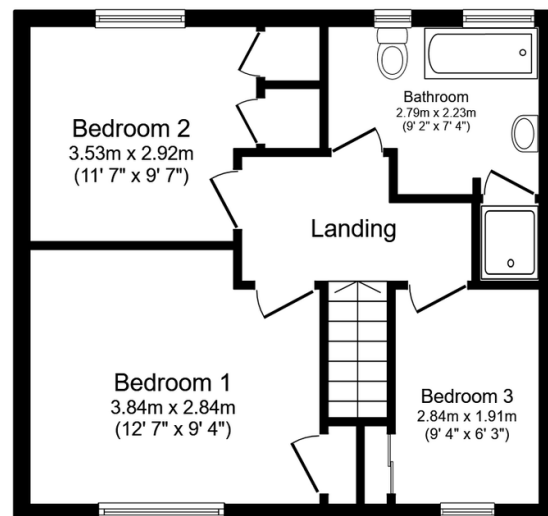
QUOTE AP0490

Key Features

- 3 Bedroom Family Home
- Great Sized Garden Perfect To Enjoy The Outdoors
- Near To Both Primary & Secondary Schools
- Short Walk To Countryside Walks & Play area
- Tenure Freehold / Council Tax Band
- 19ft Kitchen Area
- Bathroom With Useful Shower
- Near To Motorway Links
- Solar Panels Helping Towards Running Costs
- QUOTE AP0490



Ground Floor
Floor area 44.0 sq.m. (474 sq.ft.)



First Floor
Floor area 42.5 sq.m. (457 sq.ft.)

Total floor area: 86.5 sq.m. (931 sq.ft.)

This floor plan is for illustrative purposes only. It is not drawn to scale. Any measurements, floor areas (including any total floor area), openings and orientations are approximate. No details are guaranteed, they cannot be relied upon for any purpose and do not form any part of any agreement. No liability is taken for any error, omission or misstatement. A party must rely upon its own inspection(s). Powered by www.Propertybox.io