



JULES MIDDLETON

exp[®] UK

@ jules.middleton@exp.uk.com

🌐 julesmiddleton.exp.uk.com

📞 07539 429 451

29 Noke Shot,
£695,000

4 1 1



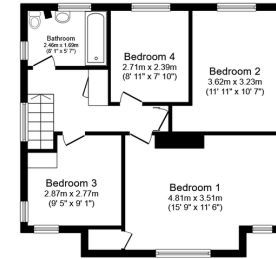
- End-terrace family home with huge potential.
- Two reception rooms, four double bedrooms.
- Off Street Parking with double garage.
- Upstairs bathroom, downstairs cloakroom.
- 15 mins from town centre and mainline station.
- Substantial garden and plot to extend (STPP).
- Large kitchen/breakfast, separate utility.
- Real wood floors, fireplace, ample storage.
- Walking distance to both primary and secondary schools.
- Please quote JM0792 when enquiring.





Ground Floor

Floor area 108.5 m² (1,168 sq.ft.)



First Floor

Floor area 53.6 m² (577 sq.ft.)

TOTAL: 162.0 m² (1,744 sq.ft.)

This floor plan is for illustrative purposes only. It is not drawn to scale. Any measurements, floor areas (including any total floor area), openings and orientations are approximate. No details are guaranteed, they cannot be relied upon for any purpose and do not form any part of any agreement. No liability is taken for any error, omission or misstatement. A party must rely upon its own inspection(s). Powered by www.Propertybox.io

DEVELOPERS AWARE - A spacious family home with large plot at the side with potential to extend (STPP). Within walking distance to both primary, secondary schools and local amenities. Offered chain free.

