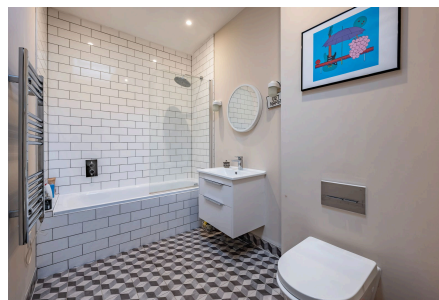


Pamphilon House, High Street, BR1

1 1 1

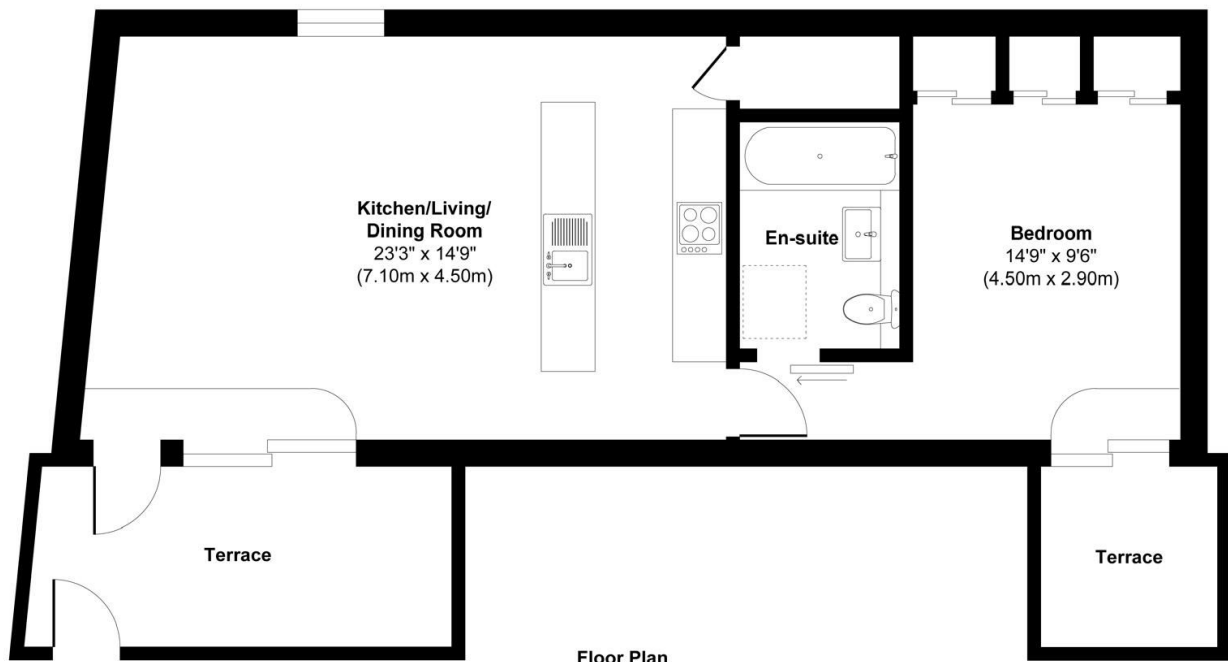


A must-see one-bedroom apartment in the heart of Bromley, featuring a stylish open-plan layout, a sleek kitchen with island, and the rare benefit of two private terraces, with the bedroom enjoying an en-suite and its own outdoor space.

Key Features

- Please Quote RF0924 for all Enquiries
- Contemporary one-bedroom apartment
- Open-plan kitchen/living/dining room
- Spacious double bedroom with en-suite
- Central Bromley High Street location
- Set within the modern Pamphilon House development
- Two private terraces
- Stylish kitchen with island
- Contemporary finish throughout
- Excellent transport links via Bromley South station

Pamphilon House, High Street, Bromley, BR1



Approx. Gross Internal Floor Area 580 sq. ft / 53.87 sq. m

Illustration for identification purposes only, measurements are approximate, not to scale.

Produced by Elements Property