



STEVEN ROSENTHAL

exp<sup>®</sup> UK

@ [steven.rosenthal@exp.uk.com](mailto:steven.rosenthal@exp.uk.com)

🌐 [stevenrosenthal.exp.uk.com](http://stevenrosenthal.exp.uk.com)

☎ 07884 131 817



## 4 Exchange Mansion, Victoria Close, Rickmansworth, Hertfordshire, WD3 4EQ

**A superb two bedroom / two bathroom ground floor apartment situated in the heart of Rickmansworth.**

- Superb two bedroom ground floor apartment
- Impressive open plan kitchen / living / dining room
- Palatial entrance hall
- Modern bathroom and stylish ensuite shower room
- Practical utility room
- Well kept communal areas, lift and video entry system
- Secure parking for two cars
- Lease: 125 years from 01/01/16
- Service charge: £3000 PA / Ground rent: £300 PA
- Private terrace with patio

A stunning two-bedroom, two-bathroom ground floor apartment in the heart of Rickmansworth. Built in 2016 by Chase New Homes, this luxurious home offers a highly spacious and welcoming reception hall leading to a generous open-plan kitchen/living/dining area, filled with natural light and ideal for both entertaining and everyday living. The high-specification kitchen features sleek stone worktops and premium integrated appliances. The impressive principal bedroom benefits from a stylish en-suite shower room, while the second double bedroom is served by a contemporary family bathroom. Further highlights include a video entry system, lift access, beautifully maintained communal gardens, and two secure parking spaces (one underground). A private terrace with a patio completes this excellent property.







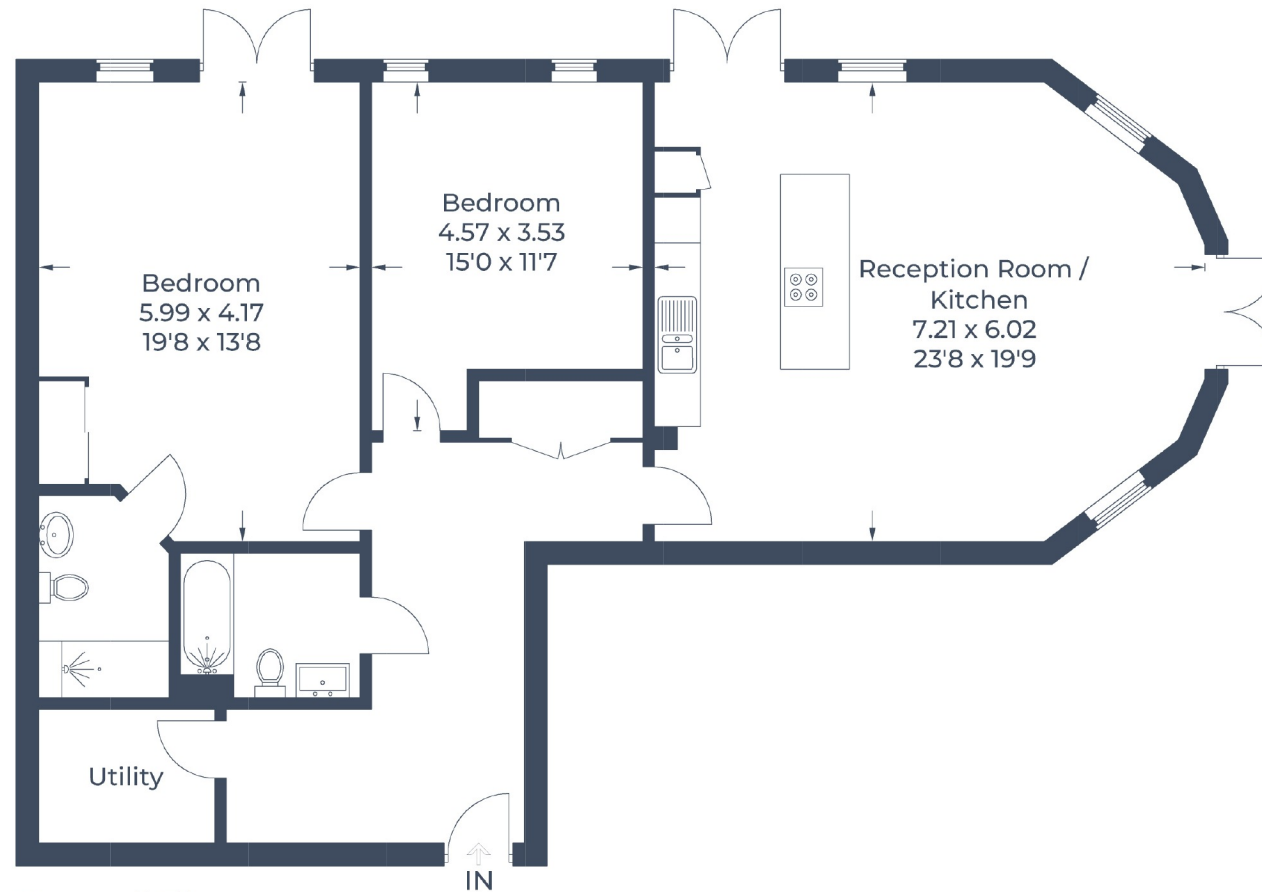
Rickmansworth's strategic location ensures seamless access to London, with excellent fast rail links (Chiltern Line to Marylebone) and road connections (M25 Junction 18 close by and M1 within easy reach). This makes it an attractive and efficient commuter town for those seeking a balance between urban and rural life. A fantastic choice of both state and private schooling options are available locally.

Tenure: Leasehold | EPC Rating: B | Council Tax Band: E





Approximate Gross Internal Area = 113.9 sq m / 1,226 sq ft



**Ground Floor**

Illustration for identification purposes only,  
measurements are approximate, not to scale.

© CJ Property Marketing Produced for EXP - Steven Rosenthal