



Your Logo

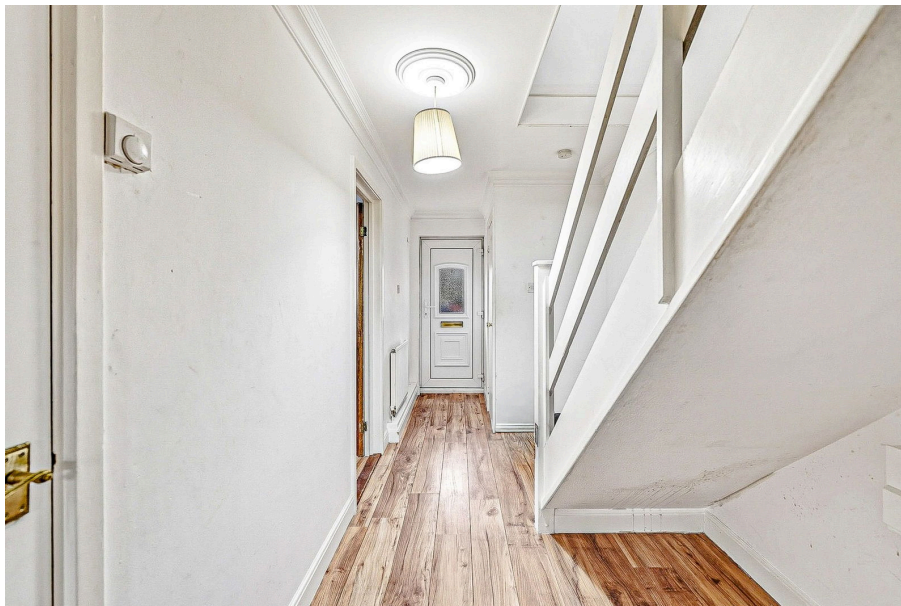


## Bardfield Way, Rayleigh, SS6 9HE

Guide Price £340,000

3 1 2

- Three bedroom end terrace house
- Separate lounge + kitchen/ diner + conservatory
- Three-piece bathroom suite on first floor
- Close to Rayleigh station & local shops
- Ref: WD 1273
- Guide price £340,000 - £350,000
- In catchment for excellent grammar schools
- Chain-free, no onward chain
- Ideal first-time purchase
- Low-maintenance rear garden & front garden

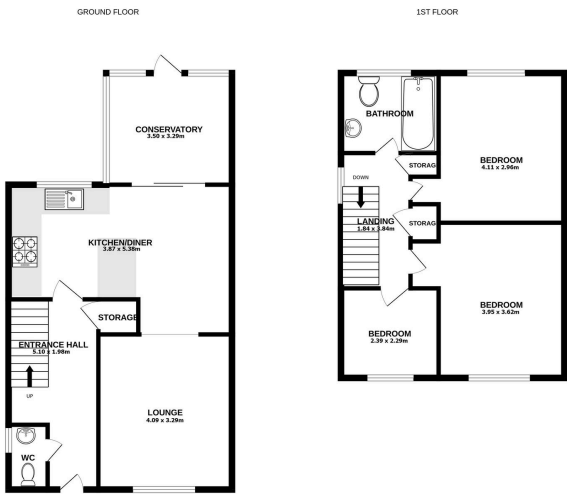


**THE PERFECT FIRST TIME BUYERS HOME!!!** Guide price £340,000 - £350,000 Ref: WD1273 A fantastic opportunity to purchase this well-presented three bedroom end-of-terrace home, ideally located on the ever-popular Bardfield Way, Rayleigh. This attractive property is offered with no onward chain, making it perfect for first-time buyers, downsizers, or those looking for a home with great scope to add value. Positioned within walking distance of Rayleigh mainline station, which offers direct rail services into London Liverpool Street, this home is perfectly situated for commuters. You'll also find local shops, cafes, and amenities nearby, along with well-regarded schools and grammar school catchments including King Edward VI Grammar School and Chelmsford County High School for Girls. The property welcomes you with a light and airy entrance hall, providing access to a ground floor cloakroom/W.C.









We have every effort to have made to ensure the accuracy of the figures provided here. Measurements of plots, fixtures, fittings and any other items are approximate and no responsibility is taken for any errors, omissions or misstatements. The plan for the building project has not been used to make any other project or project. The figures, figures and dimensions shown here have not been tested and no guarantee as to their accuracy or efficiency can be given. Made with software (2022)

