



Chartham Downs Road
Canterbury

Offers Over
£625,000

Bedrooms: 5

Bathrooms: 3

Receptions: 3

This exceptional five-bedroom detached home enjoys a prime position with breath taking countryside views, offering a peaceful and idyllic retreat within a highly desirable neighbourhood. With off-street parking for up to three vehicles, the property combines rural tranquillity with everyday convenience.

The home has been thoughtfully extended to create generous and versatile living space, ideal for modern family life. On entering, you are welcomed into a bright and spacious interior, where large sliding doors effortlessly connect indoor and outdoor living—perfect for entertaining, family gatherings, and summer barbecues.

The contemporary kitchen is both stylish and practical, featuring ample storage and worktop space, complemented by a walk-in pantry and two utility rooms that make day-to-day living effortless. The ground floor also benefits from a well-appointed double bedroom with an en-suite shower room, providing ideal accommodation for guests or those requiring ground-level living.

Upstairs, the master bedroom offers a luxurious retreat with its own en-suite. Three further bedrooms and a modern family bathroom complete the first floor, providing flexible accommodation for growing families.

Outside, the beautifully landscaped garden enjoys sunlight throughout the day and offers a serene setting for al fresco dining, entertaining, or simply relaxing while taking in the surrounding countryside.

This impressive home delivers a harmonious blend of comfort, style, and functionality. With its versatile layout, stunning views, and modern amenities, it is perfectly suited to family living—offering the peace of countryside life without compromising on accessibility or convenience.

A rare opportunity to acquire a spacious and elegant family home in such a sought-after location. Early viewing is highly recommended.

If you'd like, I can also:

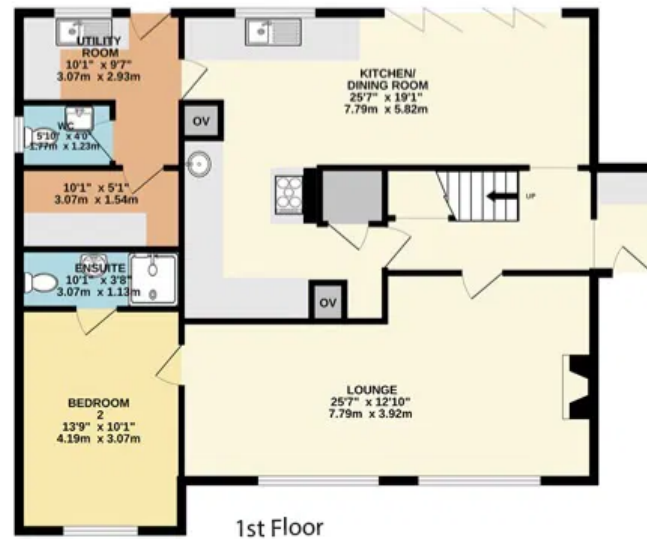




The Downs Chartham Downs Road CANTERBURY CT4 7PS

Approximate Gross Internal Area
Main House = 165.9 SqM 1.786sq.ft

Ground Floor



1st Floor



FOR ILLUSTRATIVE PURPOSES ONLY- NOT TO SCALE

The Position & size of doors, windows, appliances and other features are approximate only.

Mark Ranger

94 Coombe Drive Sittingbourne Kent ME10 3BY

07931 438 061

mark.ranger@exp.uk.com

<https://markranger.exp.uk.com/>