

Princes Plain, Bromley, BR2

3 2 1

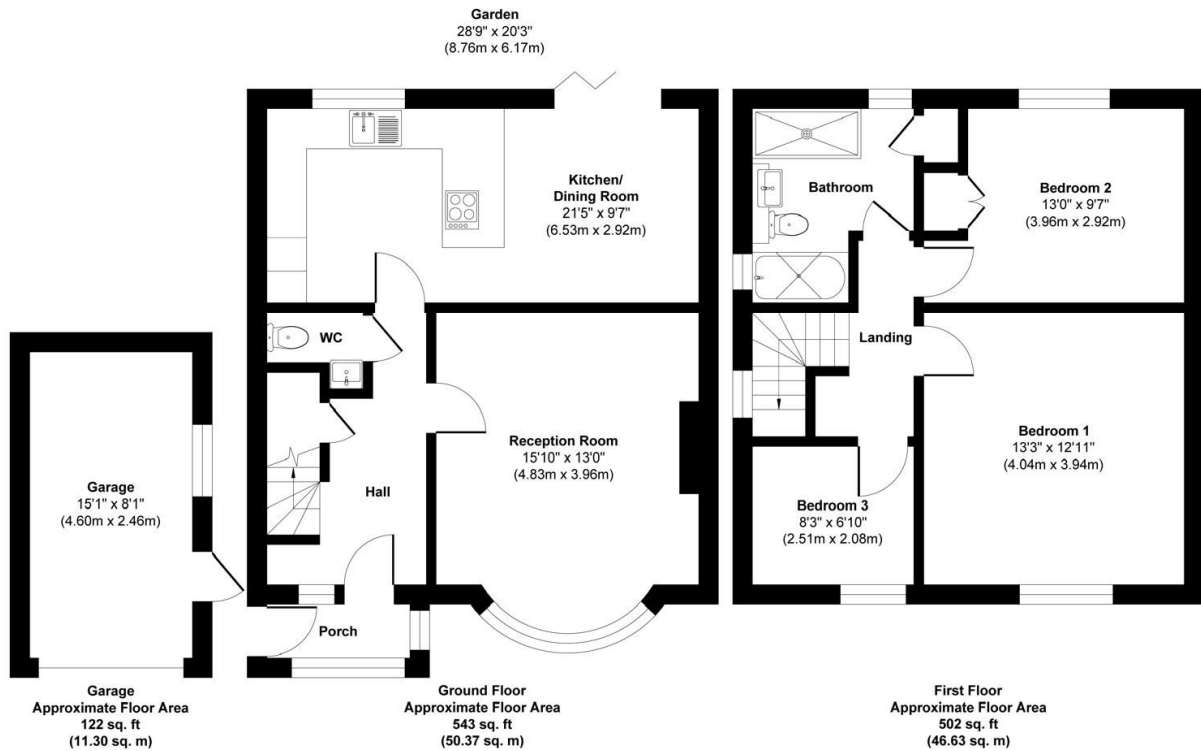


A beautifully refurbished three-bedroom semi-detached family home located on a sought-after residential road in Bromley, moments from green open spaces and highly regarded schools. Offering a spacious open-plan kitchen/dining room, generous reception, stylish bathroom, a south-facing garden and a garage, this home blends modern finishes with thoughtful design and family practicality.

Key Features

- Please Quote RF0924 for all Enquiries
- Arrange a viewing today.
- Semi-detached three bedroom family home on a popular Bromley road
- Bright bay-fronted reception room
- Contemporary open-plan kitchen/diner with peninsula
- Luxury family bathroom with walk-in shower & bath
- Downstairs WC
- Southwest-facing rear garden with lawn & patio
- Detached garage & off-street parking
- Close to sought-after schools, green spaces & Bromley South station

Princes Plain, Bromley, BR2 8LF



Approx. Gross Internal Floor Area 1167 sq. ft / 108.30 sq. m (Including Garage)

Illustration for identification purposes only, measurements are approximate, not to scale.

Produced by Elements Property