



WAYNE DIGGINS

exp[®] UK

@ wayne.diggins@exp.uk.com

waynediggins.exp.uk.com

07715 925 332

23 Broome Place, Aveley

Guide Price £225,000

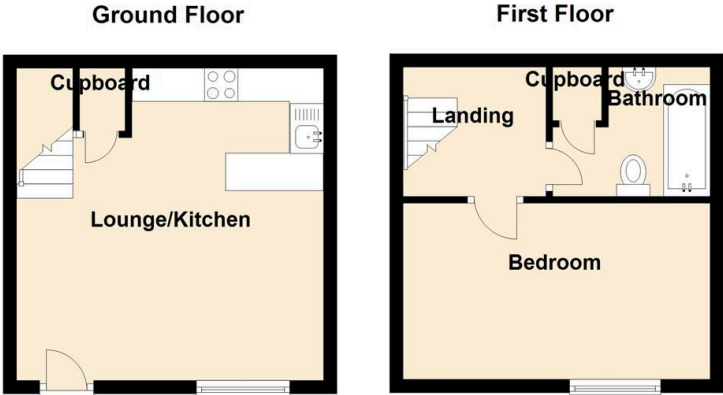
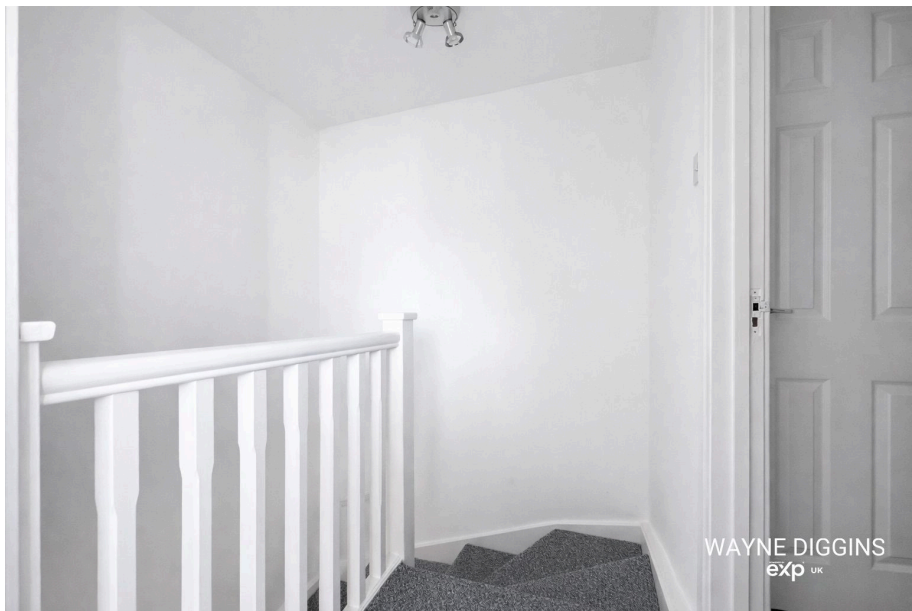
🛏 1 🚿 1 🛋 1

- Beautifully renovated one-bedroom starter home (Ref: WD1273)
- Modern fitted kitchen
- Double glazed throughout
- Grey neutral carpets to stairs, landing and bedroom
- Garage
- No onward chain
- Newly laid laminate-effect flooring to ground floor
- Newly laid laminate-effect flooring to ground floor
- Off-street parking
- Excellent access to M25, Dartford Crossing, London and Kent



HAVE A LOOK AT THIS LOVELY STARTER HOME!!! Ref: WD1273 This beautifully renovated one-bedroom starter home is offered with no onward chain and provides modern, comfortable living in a highly convenient location. The property features a contemporary fitted kitchen and newly laid laminate-effect flooring to the ground floor, creating a bright and welcoming living space. A generous storage cupboard adds valuable practicality. Upstairs, the stairs, landing and bedroom are finished with soft grey neutral carpeting, leading to a well-proportioned double bedroom. The bathroom comprises a clean white three-piece suite and further benefits from an airing cupboard, providing additional useful storage. Externally, the home offers off-street parking, a garage, and a private front garden, ideal for relaxing or entertaining. Guide price £225,000 - £250,000





23 Regents Court, Aveley

