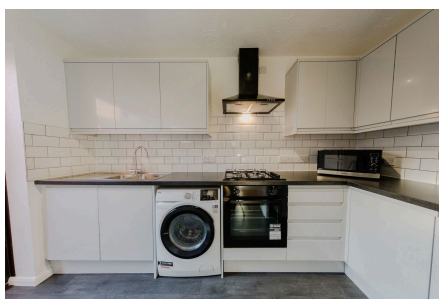


Saddlers Place, Downs Barn

Offers In Region Of £280,000

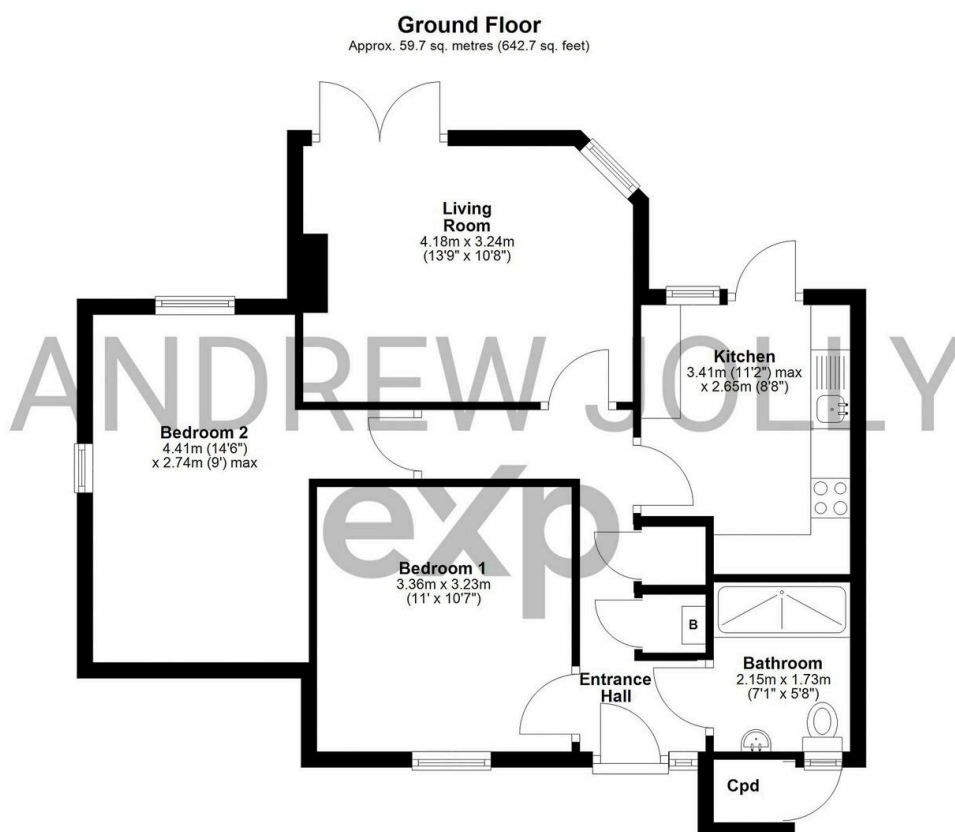
 2  1  1



A ready-to-move-into two double bedroom semi-detached bungalow, quietly tucked away in Downs Barn, offered with no upper chain, a new kitchen, wet room, landscaped rear garden and driveway parking with car port.

Key Features

- Two bedroom semi-detached bungalow
- Originally built in the 1980's
- Current owner since 2018
- Newly re-fitted kitchen
- Recently landscaped rear garden
- No upper chain
- Council tax band - C
- Approx. monthly utility bills = £150pcm
- 59.7m² = 642.7 Sq.Ft
- REF: AJ1276



Total area: approx. 59.7 sq. metres (642.7 sq. feet)

Floor plans are for illustrative purposes only and should be treated as general guidance. Dimensions are approximate to give a general indication of the floor layout only.
Plan produced using PlanUp.