


Brand new house next to Motney Hill, Lower Rainham Road

£600,000

 3  2  3



A Brand New 3 Bedroom Detached in Rainham which is the size of a 4 bedroom, Coming Soon currently under construction move to your dream home build completion Jan 2026. This stunning new-build just off Lower Rainham Road, offers 1472sq ft of stylish living space with premium finishes throughout. The heart of the home is a high-spec kitchen complete with granite worktops, built-in appliances flowing into a spacious dining area with bi-folds to the garden.

The layout is practical and luxurious, featuring a separate lounge and Kitchen/dining room plus utility room, and a downstairs WC, and underfloor heating downstairs. State of the art air sourced heat pump. Upstairs, you'll find 3 generous bedrooms, including 2 en-suites and a family bathroom making it perfect for families or professionals.

With plenty of off road parking and a nice size garden for a new build, commuters can also walk to the Railway Station(on the High Speed Link).

Quote PA1009



07778 703 438



phil.abrahart@exp.uk.com



philabrahart.exp.uk.com



Phil Abrahart is an approved agent of eXp World UK Limited, trading as eXp UK, registered at 5 Churchill Place, 10th Floor, London, United Kingdom, E14 5HU. Company number 12016573. VAT no 327 4120 29. If you have instructed another agent to sell your house and instruct eXp World Ltd to sell your property at the same time, then you could be liable to pay both agents. It is recommended that you check the contract you have with your current agent.

PHIL ABRAHART

POWERED BY
exp UK

- Brand new 3 bedroom (The size of a 4) detached home in Rainham
- Two luxurious en-suite shower rooms plus a family bathroom
- Underfloor heating on the ground floor, radiators upstairs (Air sourced heat pump)
- Located by Motley Hill with great access to local amenities
- Ready to move into around Jan 2026
- 1472sq ft of stylish, high-quality living space
- High-spec kitchen with granite worktops and built-in appliances
- Premium flooring throughout kitchen, dining area, Utility and bathrooms
- Carpets in the other rooms
- Private driveway with lots of off road parking (access shared with one other house)
- Quote PA1009 when calling in

Lower Rainham Road Rainham Gillingham ME8 7TY

Approximate Gross Internal Floor Area = 136.7 sq m / 1472 sq ft

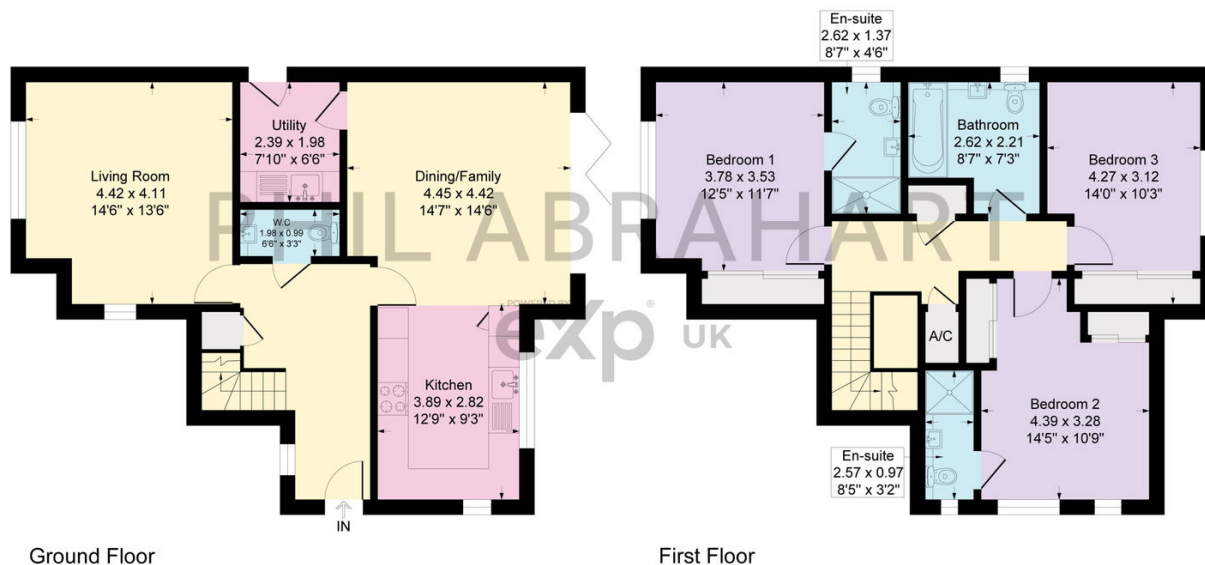


Illustration for identification purposes only, measurements are approximate, not to scale.