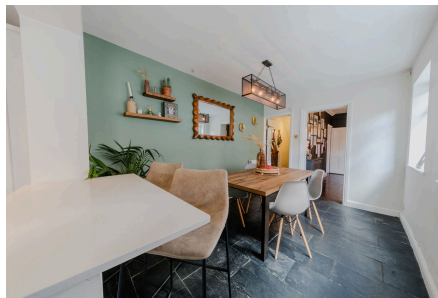


Oxford Street, Wolverton

Offers In Region Of £375,000

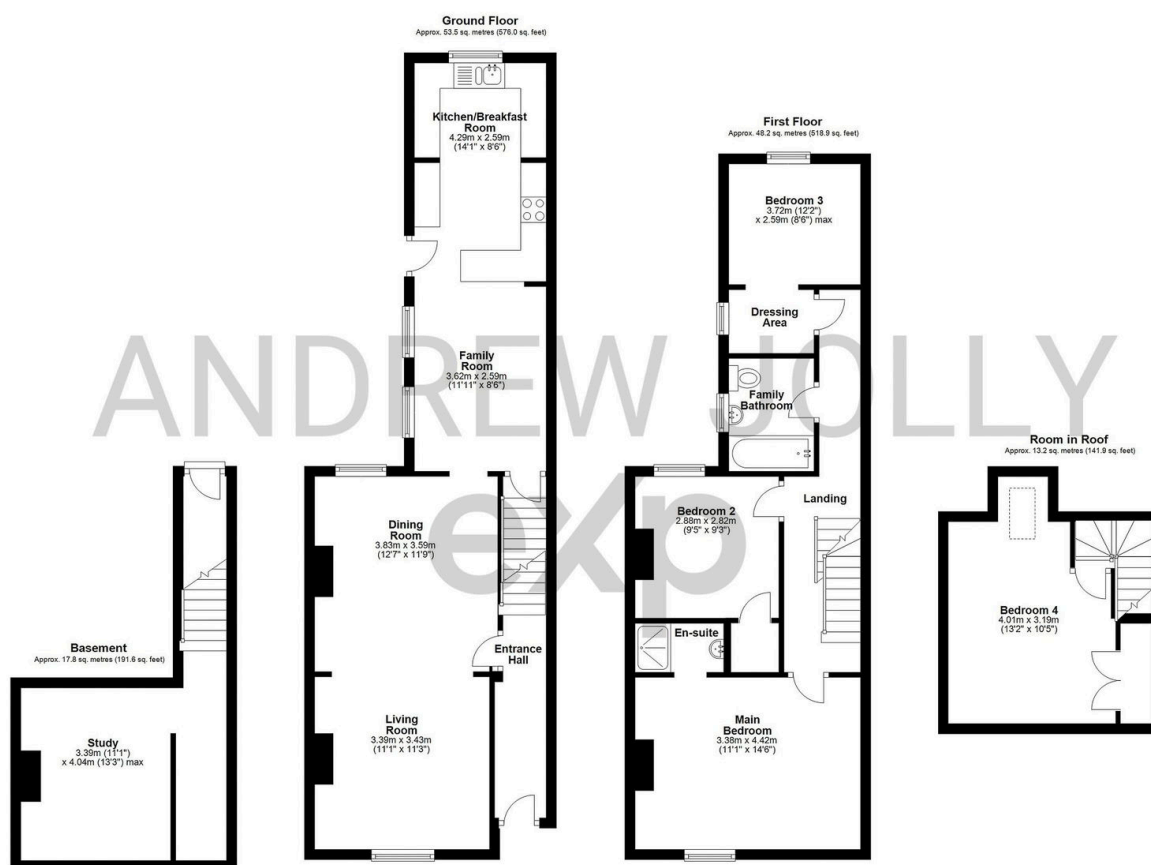
 4  1  2



A beautifully presented four bedroom Victorian home in Wolverton, thoughtfully extended and tastefully decorated throughout. Featuring a converted cellar, a stunning loft bedroom and generous living space across four floors, this unique home offers character, charm and impressive versatility just moments from local shops and Wolverton train station.

Key Features

- Victorian home dating back to late 1890's
- Current owners since 2017
- Tastefully improved by the current owners
- Council Tax Band - B
- Approx. monthly utility bills = £200.00
- 132 m2 = 1428 Sq Ft
- Vendors are upsizing & relocating
- REF: AJ1276



Floor Plans are for layout purposes only. Not drawn to scale unless stated. Windows and door openings are approximate. Whilst every care is taken in the preparation of this plan please check all dimensions. Plan produced using PlanIt.