



STEVEN ROSENTHAL

exp[®] UK

@ steven.rosenthal@exp.uk.com

🌐 .stevenrosenthal.exp.uk.com

☎ 07884 131 817

Rose Garth, Loudwater Heights, Loudwater, Rickmansworth, Hertfordshire, WD3 4AX

An attractive five bedroom detached residence located on the picturesque and highly regarded Loudwater Estate.

- Substantial 3000 sq ft five bedroom detached residence
- Wonderful plot in excess of half an acre
- Three spacious reception rooms and study
- Superb open plan kitchen / dining room
- Welcoming entrance hall, utility room and shower room
- Palatial principal suite with a modern shower room
- Immaculate beautifully presented gardens
- Large driveway providing ample parking
- Air con, solar panels, Sonos, two Tesla power walls
- Live planning permission to convert the loft space

A superb five-bedroom detached family home set on a plot of over half an acre. From the moment you enter the welcoming entrance hall, this executive home offers both comfort and style. Three large reception rooms provide flexibility, while the open-plan kitchen and dining area, with sliding doors, enjoys panoramic garden views. A study, utility room, and shower room complete the ground floor. Upstairs, the principal bedroom features a modern en-suite and a walk-in wardrobe. Four further bedrooms - one with an en-suite - along with a stylish family bathroom, are all accessed from a bright landing. The beautiful gardens are full of colour, with pristine lawns and plenty of space for entertaining and outdoor dining. The driveway offers ample parking. Additional benefits include two Tesla Powerwalls, Sonos, solar panels, and air conditioning.



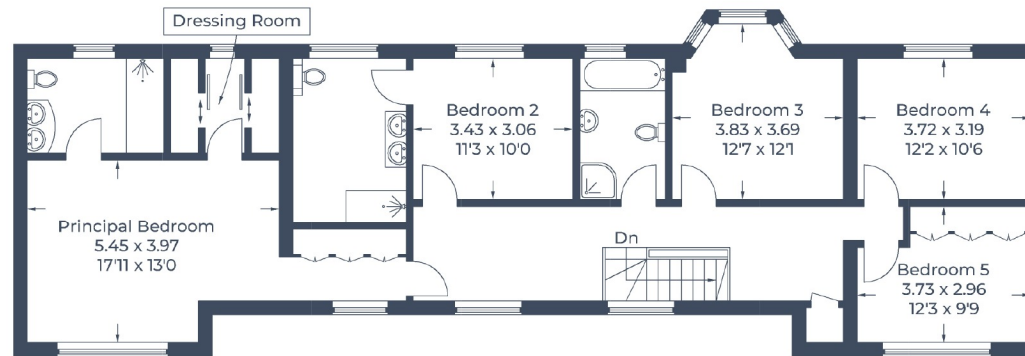


Rickmansworth's strategic location ensures easy access to London, with excellent fast rail links (Chiltern Line to Marylebone) and road connections (M25 Junction 18 close by and M1 within easy reach). This makes it an attractive and efficient commuter town for those seeking a balance between urban and rural life. An excellent choice of both state and private schools are available locally.

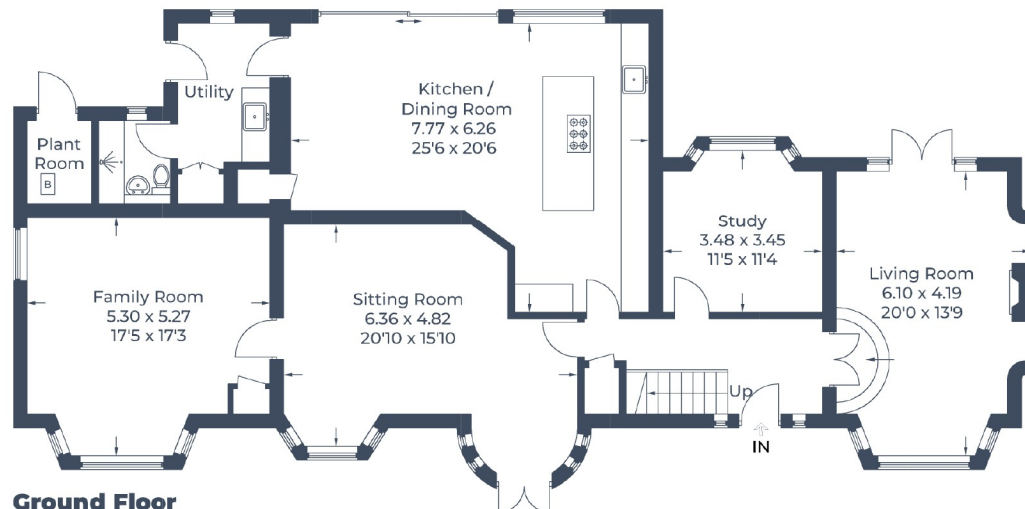
Tenure: Freehold | EPC Rating: C | Council Tax Band: H



Approximate Gross Internal Area
280 sq m / 3,009 sq ft



First Floor



Ground Floor

Illustration for identification purposes only,
measurements are approximate, not to scale.

© CJ Property Marketing Produced for Steven Rosenthal