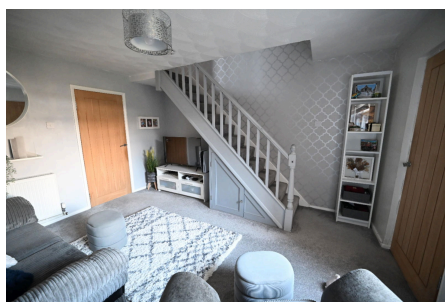


## Chelmsford Road, Strood, Rochester, ME2 2RY

Guide Price £260,000

2 1 2



CALL TO BOOK YOUR VIEWING QUOTE AP0490. If you are looking for your first home or investment property then this two bedroom home could be ideal. Ready to move straight into with the added bonus of your own garden bar and space for home office area.

## Key Features

- Two Bedroom Terrace House
- Handy Porch
- Upstairs Bathroom
- Easy Access To A2/M2
- Tenure Freehold/Council Tax Band B
- Extended Kitchen/Dining Area
- Cabin Fitted With Bar Area
- Walking Distance To Schools
- Town Centre and Strood Mainline Train Station Nearby
- QUOTE AP0490



Total floor area: 61.3 sq.m. (660 sq.ft.)

This floor plan is for illustrative purposes only. It is not drawn to scale. Any measurements, floor areas (including any total floor area), openings and orientations are approximate. No details are guaranteed, they cannot be relied upon for any purpose and do not form any part of any agreement. No liability is taken for any error, omission or misstatement. A party must rely upon its own inspection(s). Powered by www.Propertybox.io