



36 Poulders Gardens,

£300,000

DOMINIC MURPHY POWERED BY exp TM UK

@ dominic.murphy@exp.uk.com

🌐 dominicmurphy.exp.uk.com

📞 01304 746 016



## 36 Poulders Gardens,

Located in the desirable cul-de-sac of Poulders Gardens, this semi-detached home offers charm and character and well presented throughout.

**Internally** - The ground floor features a welcoming hallway, a living room complete with log burner, and a open planned kitchen dining room that works well for family living, both opening directly onto the impressive 65-foot rear garden. The garden enjoys a sunny aspect, includes a two storage sheds and offers excellent potential to extend (subject to planning).

Upstairs, there are two spacious bedrooms with built-in storage, plus a smaller third bedroom or potential office for clients who work from home, along with a three-piece family bathroom.

**Outside** - the property includes a front garden with plenty of parking and convenient side access to the large rear garden.

**Location** - Situated moments from the historic town of Sandwich, the home benefits from easy access to shops, restaurants, medical facilities, transport links, and high-speed rail services to London.



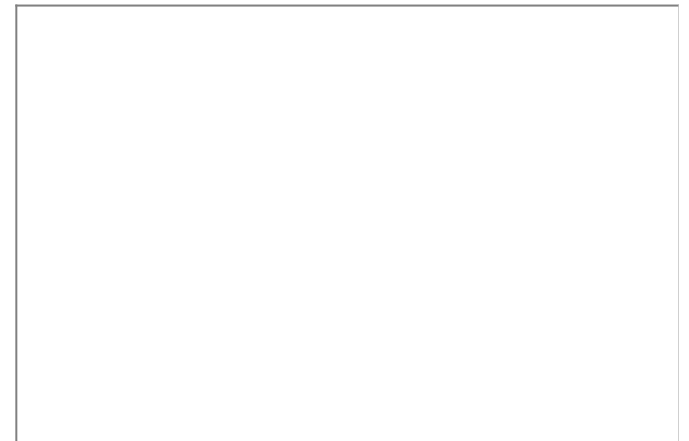
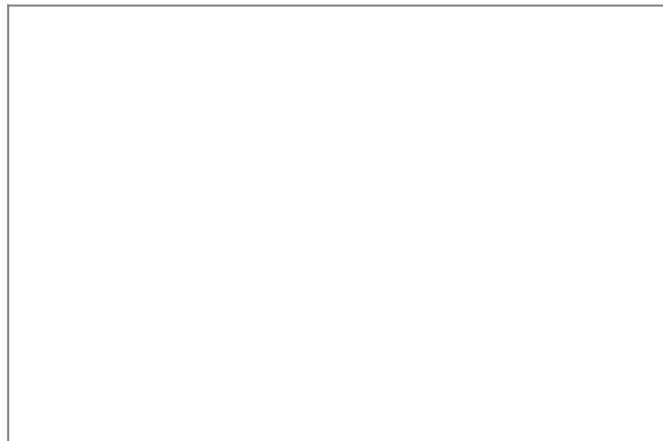




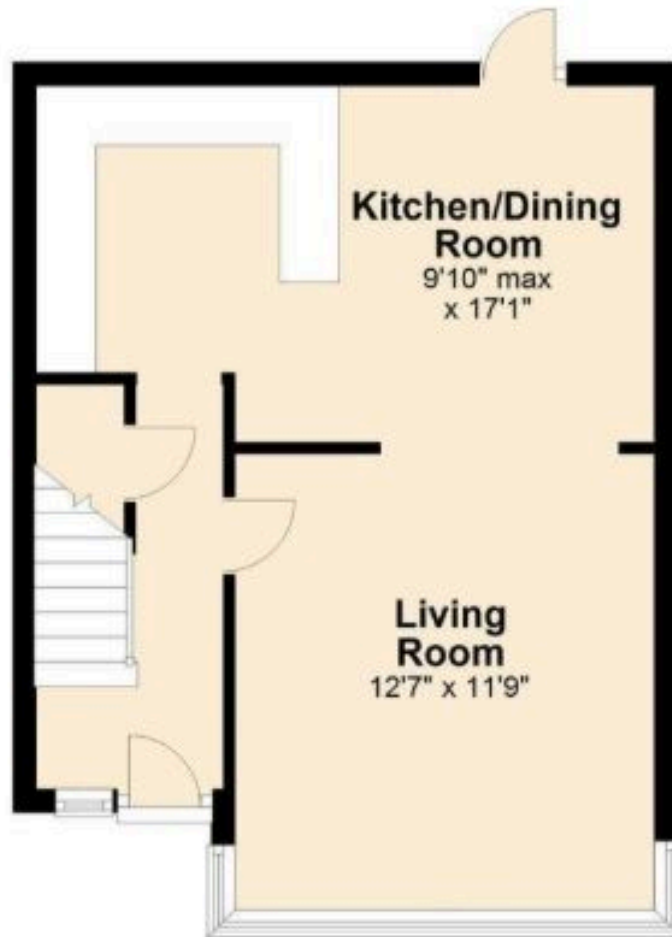








## Ground Floor



## First Floor



Please note that floorplans and design may vary and are for illustrative purposes only.  
Plan produced using PlanUp.