



CHRIS MACSWEENEY POWERED BY **exp** TM UK

@ chris.macsweeney@exp.uk.com

chrismacsweeney.exp.uk.com

☎ 07468 48 88 18

Silver Birch Avenue, Stotfold, Hitchin, Herts

£489,950

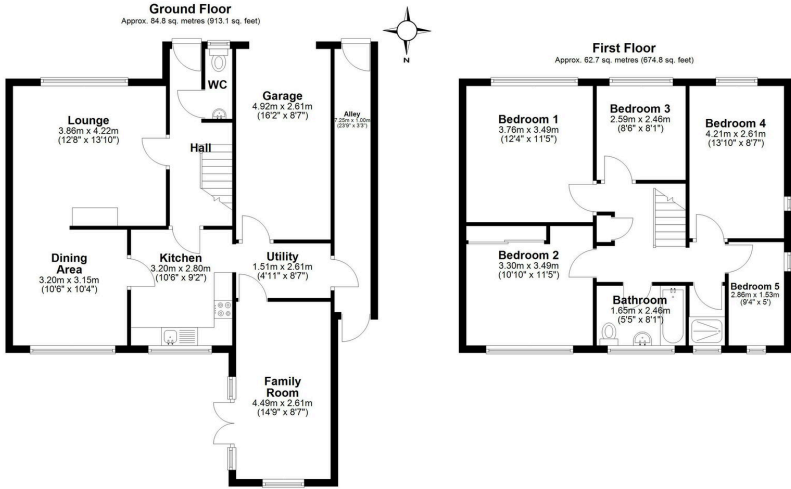
🛏 5 🚿 2 🚗 3

- Significantly Extended Family Home
- High EPC Rating - B
- Four Bedrooms PLUS Bedroom Five/Study
- Replacement Kitchen Plus Utility
- Downstairs WC
- Sought After Cul De Sac Location
- Solar Panels and Electric Car Charging
- Replacement Bathroom and Additional Shower Room
- Three Reception Rooms
- Quote Reference CM0245



NO UPPER CHAIN. This well proportioned family semi detached home is located in a sought-after cul de sac, in the popular town of Stotfold. The property has been extended to provide accommodation to include three reception rooms, a refitted kitchen with adjacent utility, downstairs WC, a replacement bathroom, an additional shower room and four bedrooms plus a further fifth bedroom/study. Outside presents a rear garden with covered side passage and a single garage with driveway parking for two vehicles. Further enhancements include roof mounted solar panelling and an electric car charger. Quote Reference CM0245





Score	Energy rating	Current	Potential
92+	A		92 A
81-91	B	90 B	
69-80	C		
55-68	D		
39-54	E		
21-38	F		
1-20	G		