



ALISON MCCAREY POWERED BY **exp** TM UK

@ alison.mccarey@exp.uk.com

alisonmccarey.exp.uk.com

07506 730 460

Neville Duke Way, Tangmere, Chichester

Offers In Region Of £400,000

3 2 1



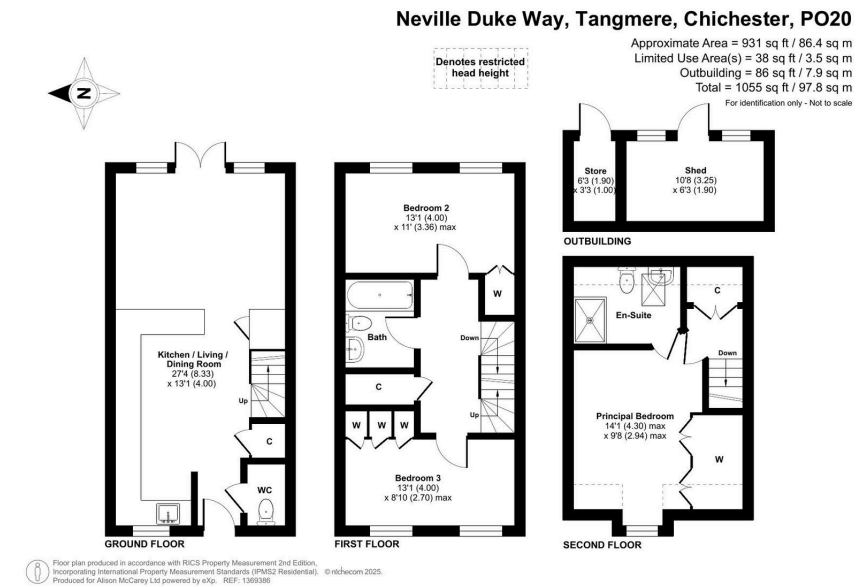
- EPC 'A' Rating
- New Boiler & Solar Panels
- Extended patio Tiled with LED lights
- Wardrobes fitted to all bedrooms
- Open plan Kitchen/Living areas
- New Premium Kitchen
- Quiet Location
- Excellent Transport Links
- Close to Schools & Shops
- Well Maintained Property





Immaculately Upgraded 3-Bedroom Semi-Detached Townhouse
| Open-Plan Kitchen | Premium Bathrooms | Oak Flooring | Built-In Wardrobes | Tiled Patio with LED Floor Lights | Solar Panels |
Rare EPC Rating of A /Off-Street Parking | Tangmere, Near
Chichester, Goodwood & South Downs

AM0249



Score	Energy rating	Current	Potential
92+	A	95 A	95 A
81-91	B		
69-80	C		
55-68	D		
39-54	E		
21-38	F		
1-20	G		

eXp World UK Ltd is a registered company at Level 37, 25 Canada Square, London, E14 5LQ.

Registered company number is 12016573. VAT Registration Number is 327 4120 29