

Whitebeam Avenue, Bromley

3 2 2

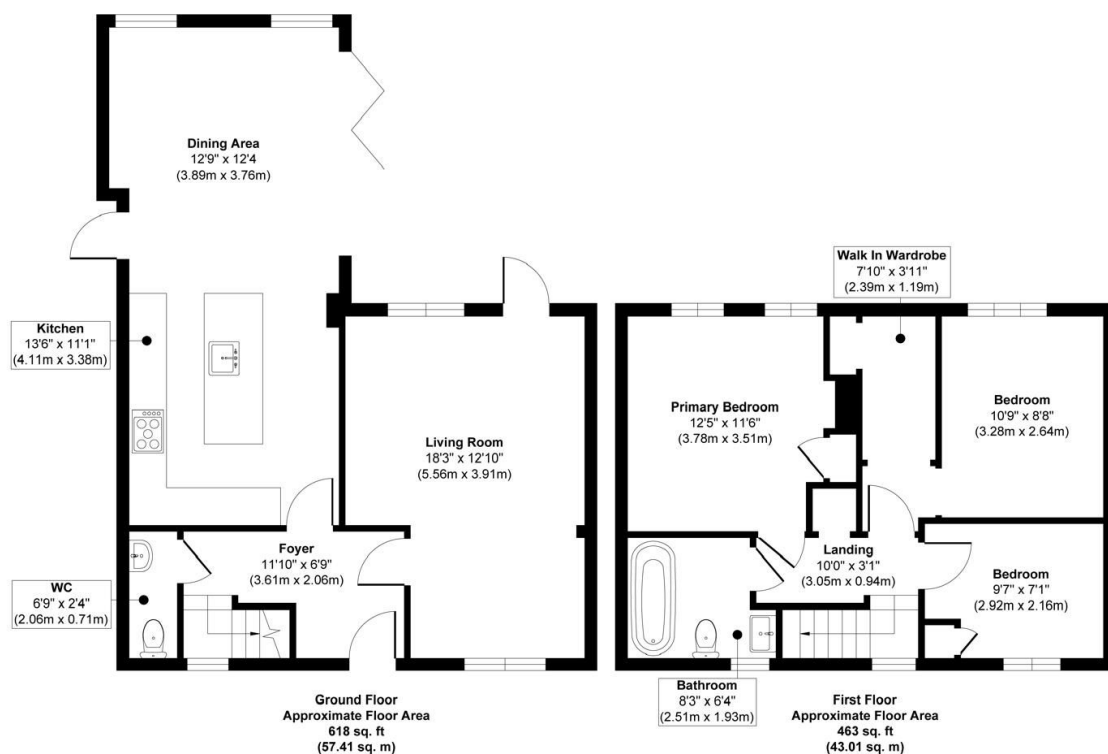


A stylish and well-presented three-bedroom terraced home offering modern open-plan living, a generous rear garden backing onto Parkfield Recreation Ground & Woodlands, and a bright, airy interior. With a stunning kitchen/diner, spacious living room, and excellent location close to schools, transport, and amenities, this property is ideal for families seeking both comfort and convenience.

Key Features

- Please Quote RF0924 for all Enquiries
- Book a viewing today
- Attractive three-bedroom terraced home in a sought-after Bromley location
- Extensive rear garden with patio and lawn backing onto Parkfield Recreation Ground & Woodlands
- Stunning open-plan kitchen/diner with skylights, central island, and bifold doors
- Separate living room offering a cosy retreat
- Downstairs WC for added convenience
- Bright and airy interior finished with stylish décor throughout
- Walk-in wardrobe in bedroom two
- Excellent location close to schools, transport links, and local amenities

Whitebeam Avenue, Bromley, BR2 8DL



Approx. Gross Internal Floor Area 1081 sq. ft / 100.42 sq. m

Illustration for identification purposes only, measurements are approximate, not to scale.
Produced by Elements Property