

Stockenbury, East Peckham, Tonbridge, TN12 5EH

Guide Price £475,000

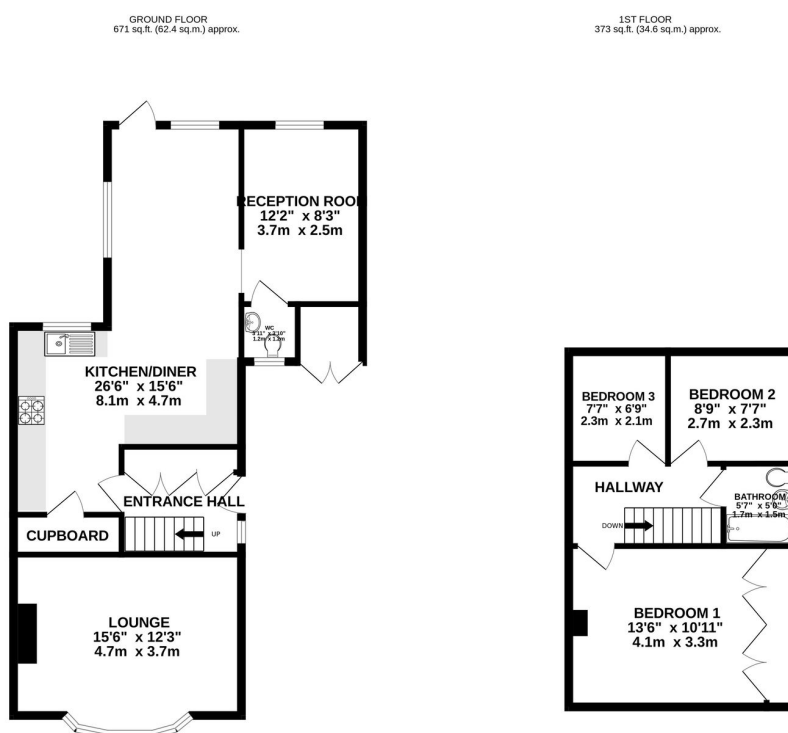
3 1 2



Set in a peaceful cul-de-sac in the ever-popular East Peckham, this stunning three-bedroom semi-detached home is perfectly placed for family life. With well-regarded schools just a short walk away, everyday amenities close at hand, and excellent transport links connecting you easily to neighbouring towns and beyond, it offers both convenience and community.

Key Features

- Beautifully presented throughout
- Open plan kitchen diner
- Second reception room ideal for a playroom or home office
- Spacious living accommodation
- Sunny aspect rear garden
- Separate cozy lounge with gas fire place
- Modern kitchen with built-in appliances
- Ground floor W/C
- Three bedrooms
- Property reference: JN0505



TOTAL FLOOR AREA: 1044 sq.ft. (97.0 sq.m.) approx.

Whilst every attempt has been made to ensure the accuracy of the floorplan contained here, measurements of doors, windows, rooms and any other items are approximate and no responsibility is taken for any error, omission or misstatement. This plan is for illustrative purposes only and should be used as such by any prospective purchaser. The services, systems and appliances shown have not been tested and no guarantee as to their operability or efficiency can be given.

Made with Metropix ©2025