

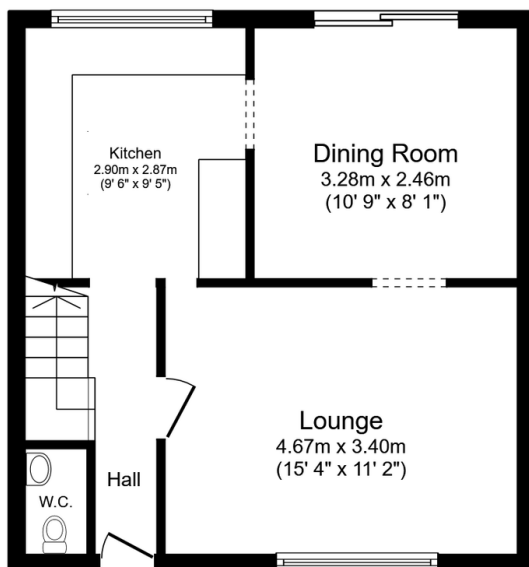
Medhurst Crescent, Gravesend DA12 4HQ

Guide Price £300,000

3 1 1

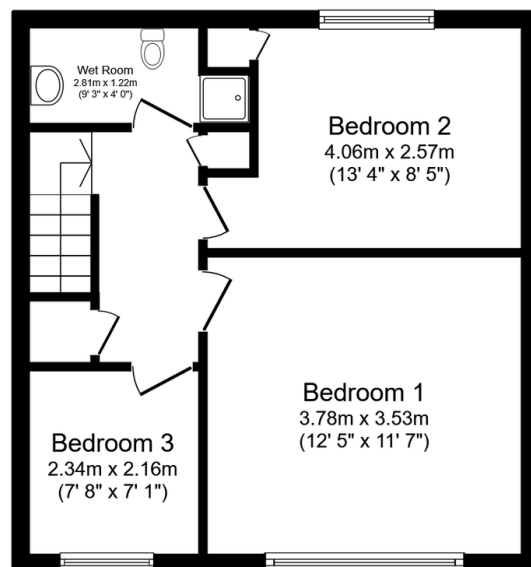


- 3 Bedroom terraced house
- Parking to the rear
- Dropped kerb to the front
- Modern kitchen
- Separate downstairs toilet
- Separate upstairs bathroom
- Ideal home for first time buyers
- Walking distance of shops and schools
- Sold with no forward chain
- Quote



Ground Floor

Floor area 41.9 sq.m. (451 sq.ft.)



First Floor

Floor area 41.9 sq.m. (451 sq.ft.)

Total floor area: 83.8 sq.m. (902 sq.ft.)

This floor plan is for illustrative purposes only. It is not drawn to scale. Any measurements, floor areas (including any total floor area), openings and orientations are approximate. No details are guaranteed, they cannot be relied upon for any purpose and do not form any part of any agreement. No liability is taken for any error, omission or misstatement. A party must rely upon its own inspection(s). Powered by www.Propertybox.io

Take a look at this 3 bedroom terraced house that is ideal for first time buyers. Located in the heart of Gravesend it is easily assessable to shops and local schools.