




CHRIS MACSWEENEY POWERED BY **exp** TM UK

@ chris.macsweeney@exp.uk.com

 chrismacsweeney.exp.uk.com

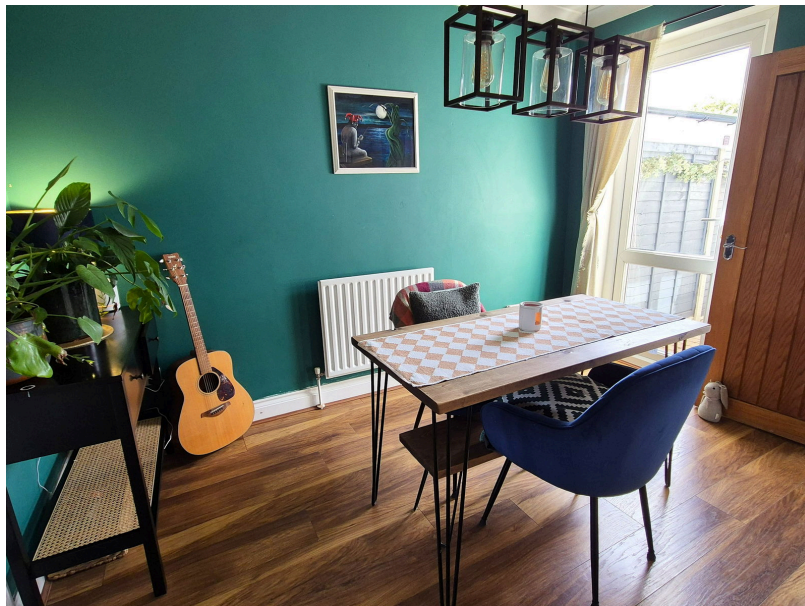
 07468 48 88 18

Hitchin Road, Arlesey, Bedfordshire

£295,000

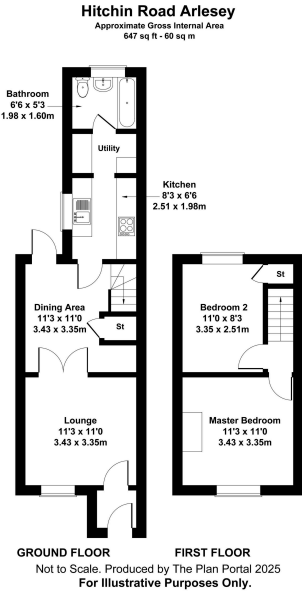
🛏 2 🚿 1 🚗 2

- A Charming Character Cottage With Traditional Styling
- Separate Lounge and Dining Rooms
- Replacement Bathroom With Power Shower
- Traditionally Styled Galley Kitchen With Additional Utility Area
- Double Glazed and Gas Central Heating
- A Short Distance to Hitchin and Letchworth
- Two Double Bedrooms
- Generous and Low Maintenance Rear Garden
- Gated Driveway Parking to the Rear
- Beautifully Presented Throughout



Located a short drive from the towns of Hitchin and Letchworth, this delightful cottage has been sympathetically styled with a combination of modern design and colour and original character. The accommodation comprises of an entrance porch leading to a lounge with double doors to a separate dining room, a fitted kitchen with appliances and additional utility area, a refitted bathroom with power shower over the bath and two double bedrooms. Outside offers a private and low maintenance rear garden which leads to enclosed driveway parking to the rear. Must be viewed! Quote ref CM0245.





Score	Energy rating	Current	Potential
92+	A		
81-91	B		88 B
69-80	C		
55-68	D	66 D	
39-54	E		
21-38	F		
1-20	G		