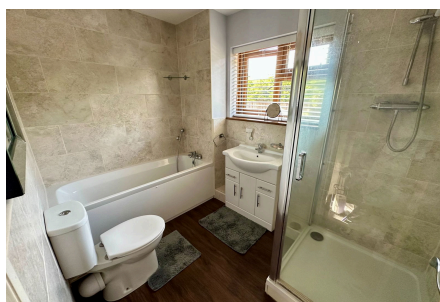


## Vidgeon Avenue, Hoo, Rochester, ME3 9DE

Guide Price £375,000 - £400,000

3 1 1

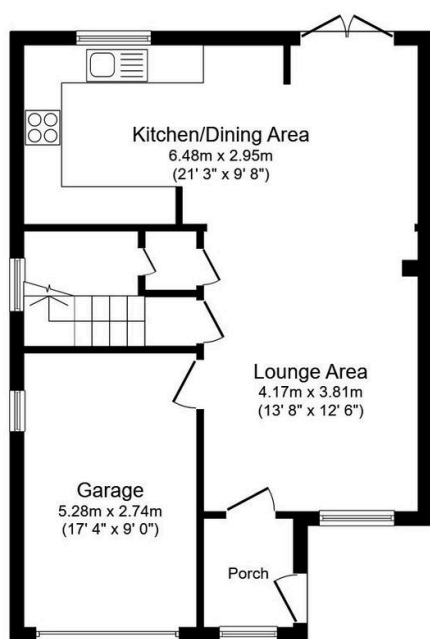


Guide Price £375,000-£400,000

This could make the ideal family home! Offering Spacious living rooms and bedrooms all capable of fitting double beds everyone can have their own space. Not forgetting the integral garage and driveway, garden with workshop all set in a popular village that offers easy access to the M2 motorway and schools within walking distance. Call and arrange your viewing today! QUOTE AP0490

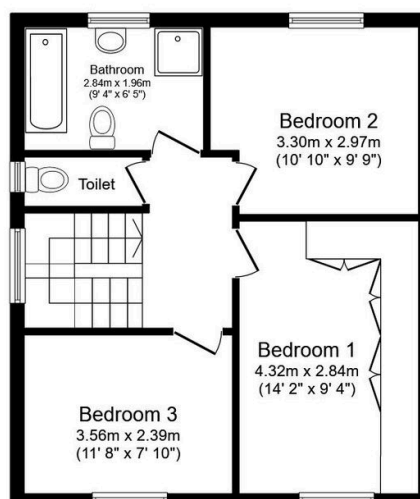
## Key Features

- 3 Double Bedroom Semi Detached
- Spacious Open Plan Living Room
- Popular Village Location
- Easy Access To Motorway Networks
- Tenure Freehold / Council Tax Band C
- Integral Garage & Driveway
- Bathroom & Separate Cloakroom
- Near To Primary & Secondary Schools
- Log Burner & Air Conditioning
- QUOTE AP0490



**Ground Floor**

Floor area 54.0 sq.m. (581 sq.ft.)



**First Floor**

Floor area 46.2 sq.m. (497 sq.ft.)

Total floor area: 100.2 sq.m. (1,078 sq.ft.)

This floor plan is for illustrative purposes only. It is not drawn to scale. Any measurements, floor areas (including any total floor area), openings and orientations are approximate. No details are guaranteed, they cannot be relied upon for any purpose and do not form any part of any agreement. No liability is taken for any error, omission or misstatement. A party must rely upon its own inspection(s). Powered by [www.Propertybox.io](http://www.Propertybox.io)