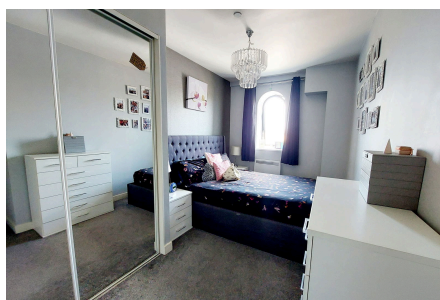
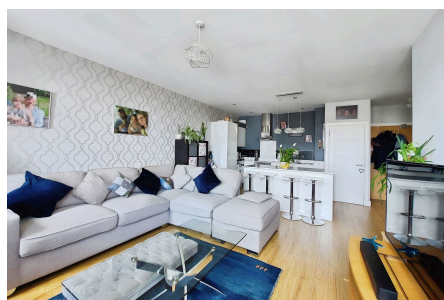


William Shipley House, Knightrider Street, Maidstone, ME15 6XD

Guide Price £160,000 - £180,000

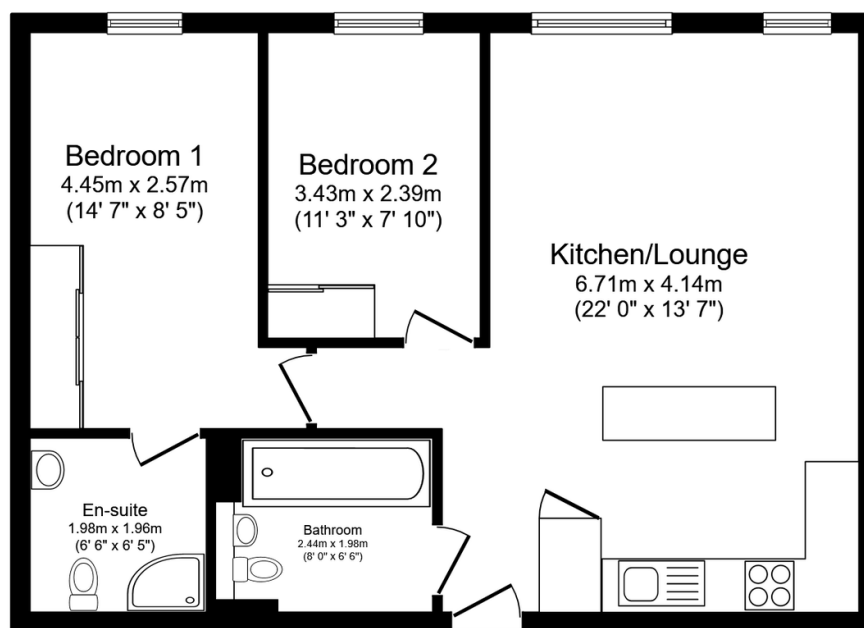
2 2 1



CALL TO BOOK YOUR VIEWING. Guide £160,000 - £180,000. Pick up your keys and move straight into this modern spacious apartment in the heart of Maidstone. The location is perfect if you need to commute or be close to all your daily essentials. With lift access this means no struggle with shopping and wheelchair friendly. QUOTE AP0490

Key Features

- Two Bedroom Third Floor Flat
- Secure Gated Parking With Two Parking Spaces
- Light Open Plan Living
- Ensuite To Master Bedroom
- Tenure Leasehold 115 year Lease/ Council Tax Band C
- Lift Access
- Modern Interior
- Central Location
- Walking Distance To Train Station
- QUOTE REF AP0490



Floor Plan

Floor area 60.4 sq.m. (650 sq.ft.)

Total floor area: 60.4 sq.m. (650 sq.ft.)

This floor plan is for illustrative purposes only. It is not drawn to scale. Any measurements, floor areas (including any total floor area), openings and orientations are approximate. No details are guaranteed, they cannot be relied upon for any purpose and do not form any part of any agreement. No liability is taken for any error, omission or misstatement. A party must rely upon its own inspection(s). Powered by www.Propertybox.io