



43 Sandwich Road, Cliffsend

Guide Price £600,000

DOMINIC MURPHY POWERED BY exp TM UK

@ dominic.murphy@exp.uk.com

🌐 dominicmurphy.exp.uk.com

📞 01304 746 016



## 43 Sandwich Road, Cliffsend

Positioned in a prime seafront location overlooking the iconic replica Viking ship and stretching across to picturesque Sandwich Bay, this impressive detached residence offers a rare opportunity to own a home with unforgettable views and generous living space throughout.

**Internally** - the property welcomes you through a porch into a spacious entrance hall. The ground floor features a bright and expansive lounge/dining room, a separate sitting/garden room, and a beautifully appointed kitchen complete with sleek quartz worktops, an abundance of matching wall and base units, and a charming breakfast area. Additional conveniences include a separate office, utility room, and a modern shower room/WC. A converted garage adds flexible living space, ideal for a playroom, studio, or guest accommodation.

Upstairs, a wide landing leads to four well-proportioned double bedrooms. Two front-facing rooms enjoy uninterrupted sea views, with one benefiting from its own private balcony, perfect for enjoying a morning coffee while taking in the coastal breeze. A three-piece family bathroom and a separate WC complete the upper floor.

**Outside** - The beautifully landscaped rear garden is a true highlight, featuring a large central circular lawn surrounded by vibrant planting, a generous patio area ideal for outdoor entertaining, and a charming garden path leading to a substantial summer house, ideal for hobbies, relaxation, or garden parties. There is ample off-road parking,









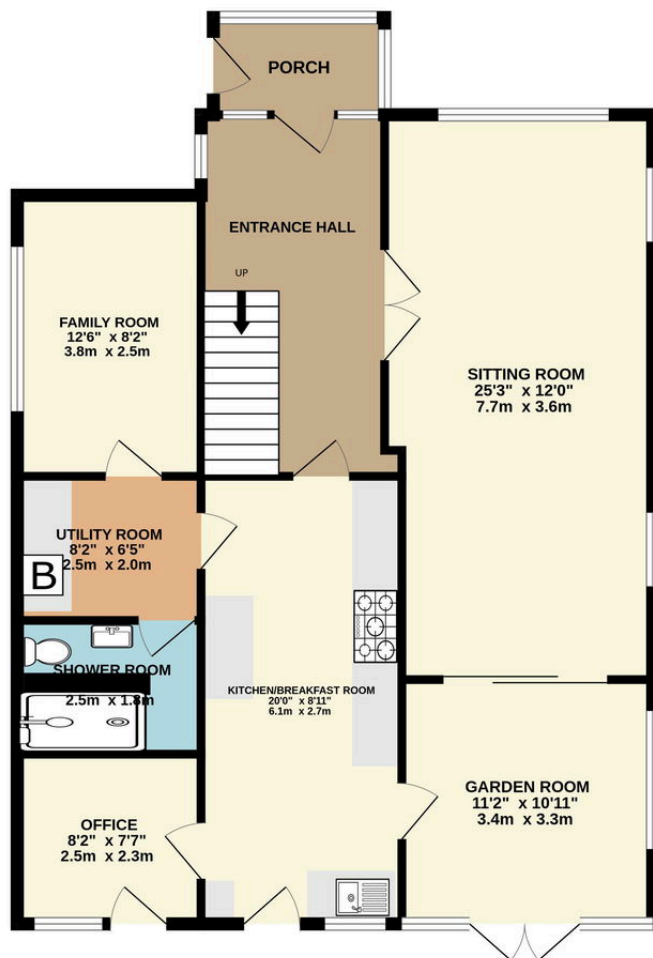




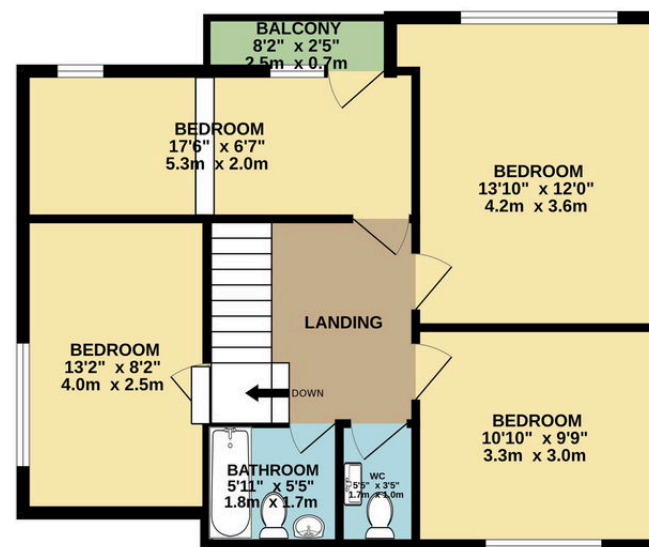




GROUND FLOOR  
1023 sq.ft. (95.0 sq.m.) approx.



1ST FLOOR  
618 sq.ft. (57.4 sq.m.) approx.



TOTAL FLOOR AREA : 1641 sq.ft. (152.5 sq.m.) approx.

Whilst every attempt has been made to ensure the accuracy of the floorplan contained here, measurements of doors, windows, rooms and any other items are approximate and no responsibility is taken for any error, omission or mis-statement. This plan is for illustrative purposes only and should be used as such by any prospective purchaser. The services, systems and appliances shown have not been tested and no guarantee as to their operability or efficiency can be given.  
Made with Metropix ©2025

eXp World UK Ltd is a registered company at Level 37, 25 Canada Square, London, E14 5LQ.

Registered company number is 12016573. VAT Registration Number is 327 4120 29