

Lime Grove, Sidcup, DA15 8PJ

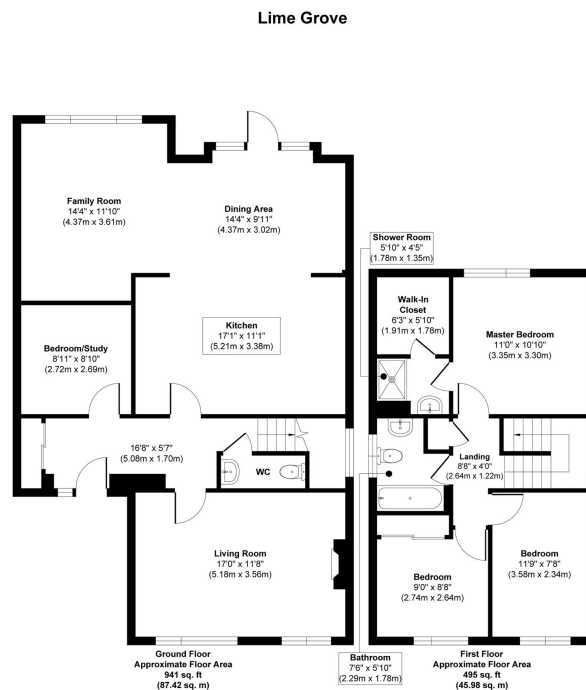
4 2 2



GUIDE PRICE £675,000 -£725,000. Please Quote RF0924 for all Enquires. This modern 3/4 bedroom detached home in Blackfen, Sidcup features an open-plan kitchen, diner, and family room with bi-fold doors leading to a landscaped garden. The ground floor also includes a separate living room, guest WC, and a versatile home office/bedroom. Upstairs, the master bedroom has a shower room and walk-in wardrobe, with two additional double bedrooms and a family bathroom. The exterior offers a large pebbled driveway for two cars and a spacious rear garden with a paved area and lawn.

Key Features

- Book a viewing today!
- Stunning modern fitted kitchen with a breakfast bar and open-plan family room
- Downstairs WC
- Bi-folding doors leading out to the rear garden
- Home Office/Bedroom on the ground floor
- 3/4 bedroom detached family home
- Separate Living Room
- Master bedroom with ensuite and walk-in wardrobe
- Beautiful garden with a large paved area and lush lawn
- Please Quote RF0924 for all Enquires



Approx. Gross Internal Floor Area 1436 sq. ft / 133.40 sq. m
Illustration for identification purposes only, measurements are approximate, not to scale.
 Produced by Elements Property