

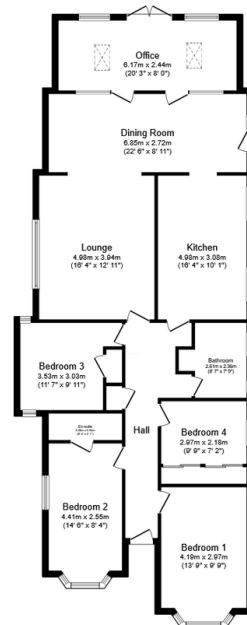
**Downs road, Istead Rise, Gravesend DA13 9HE**

From £675,000

4 2 3



- 4 Bedroom Extended Detached bungalow
- Open plan lounge dining area
- Backs on to farmers fields
- Drive way for multiple cars
- Potential for no chain
- En suite to main bedroom
- Fully fitted Kitchen
- Ideal space to entertain guests
- Walking distance to Istead primary school and shops
- QUOTE REF NO1232



Floor Plan

Floor area 136.9 sq.m. (1,473 sq.ft.)

Total floor area: 136.9 sq.m. (1,473 sq.ft.)

This floor plan is for illustrative purposes only. It is not drawn to scale. Any measurements, floor areas (including any total floor area), openings and orientations are approximate. No details are guaranteed, they cannot be relied upon for any purpose and do not form any part of any agreement. No liability is taken for any error, omission or misstatement. A party must rely upon its own inspection(s). Powered by www.Propertybox.io

4 Bedroom Extended Detached Bungalow located in the popular village of Istead Rise. Located on sought after Downs road, you are within walking distance of the primary school. There is parking for several cars as well as both bedroom and living space for growing families. The property is spacious throughout and has a stunning sunny garden that backs onto farmers fields. There is potential to extend like others have done in the road. This is subject to planning permission.

QUOTE REF N01232