

## Salisbury Road, Bromley, BR2

3 1 1

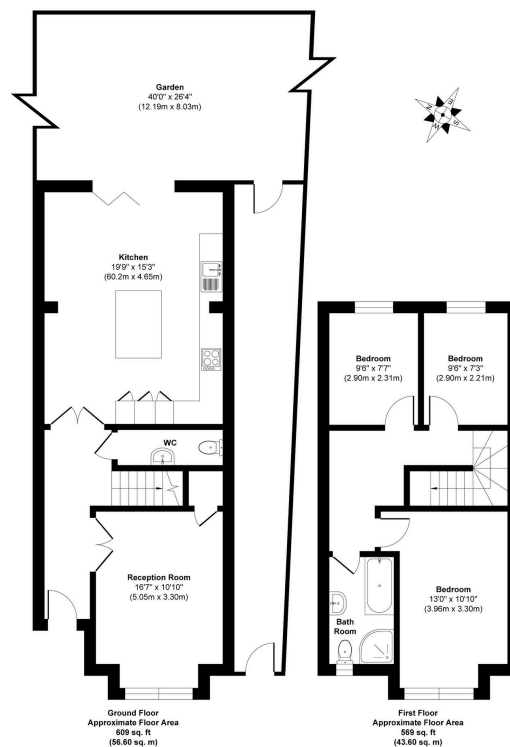


A charming 3-bedroom end of terrace home on Salisbury Road, Bromley, built in 2001 with Victorian-style character. Featuring a spacious kitchen/diner with central island and French doors to the garden, a separate reception room, three bedrooms, and potential for a loft extension. Set on a generous corner plot with a landscaped front garden, side access, and a large rear garden with patio and lawn—ideal for family living.

## Key Features

- Please Quote RF0924 for all Enquires
- Three-bedroom end of terrace home
- Separate reception room with bay window
- Charming landscaped front garden
- Potential to extend into the loft (STPP)
- Book a viewing today!
- Large kitchen/diner with central island and garden access
- Downstairs W.C. for added convenience
- Rear garden with patio, lawn, and mature planting
- Quiet residential location, close to outstanding state schools and transport links

Salisbury Road, Bromley, BR2 9PU



Approx. Gross Internal Floor Area 1078 sq. ft / 100.20 sq. m  
Illustration for identification purposes only. Measurements are approximate, not to scale.

Produced by Elements Property

RAVINA FERMAH  
exp<sup>®</sup> UK