



STEVEN ROSENTHAL

exp[®] UK

@ steven.rosenthal@exp.uk.com

🌐 stevenrosenthal.exp.uk.com

☎ 07884 131 817

36 Copthorne Road, Croxley Green, Rickmansworth, WD3 4AQ

An attractive and beautifully presented four bedroom detached house located on Croxley Green's premier road.

- Immaculate four bedroom detached family home
- Large open plan living / dining room
- Elegant kitchen / breakfast room with stone worktops
- Welcoming entrance hall, utility room and cloakroom
- Snug and study with fitted furniture
- Palatial principal bedroom suite with modern bathroom
- Two further contemporary shower rooms
- Fabulous front and rear gardens
- Carriage driveway providing ample off street parking
- Wonderful natural light throughout

A delightful four-bedroom detached family home situated on a highly sought-after private road. From the moment you arrive, this welcoming property instantly feels like home. The spacious entrance hall leads to a bright and airy open-plan living and dining room with doors opening onto the garden. The elegant kitchen is fitted with stunning stone worktops, a cosy breakfast area, and a separate utility room for added practicality. A snug offers the perfect place to unwind, while a fitted study provides a dedicated workspace. A cloakroom completes the ground floor. Upstairs, off a generously sized landing, are four double bedrooms - two with en suite facilities - including a luxurious principal suite. A contemporary shower room serves the remaining bedrooms. Outside, the beautifully maintained gardens are bursting with colour and offer an excellent space for outdoor dining, play, and relaxation. The carriage driveway to the front provides ample parking.





Croxley Green is a large village, known for its picturesque green, annual events, and popular pubs. It offers a range of local amenities, with more extensive shopping and leisure options in nearby Watford and Rickmansworth. Croxley Underground Station provides easy access to London, and the M25 is accessible via junctions 18 or 19. The area also boasts excellent state, grammar, and private schools.

Tenure: Freehold | Council Tax Band: G | EPC Rating: C



Approximate Gross Internal Area
 Ground Floor = 131.8 sq m / 1,419 sq ft
 First Floor = 102.5 sq m / 1,103 sq ft
 Total = 234.3 sq m / 2,522 sq ft

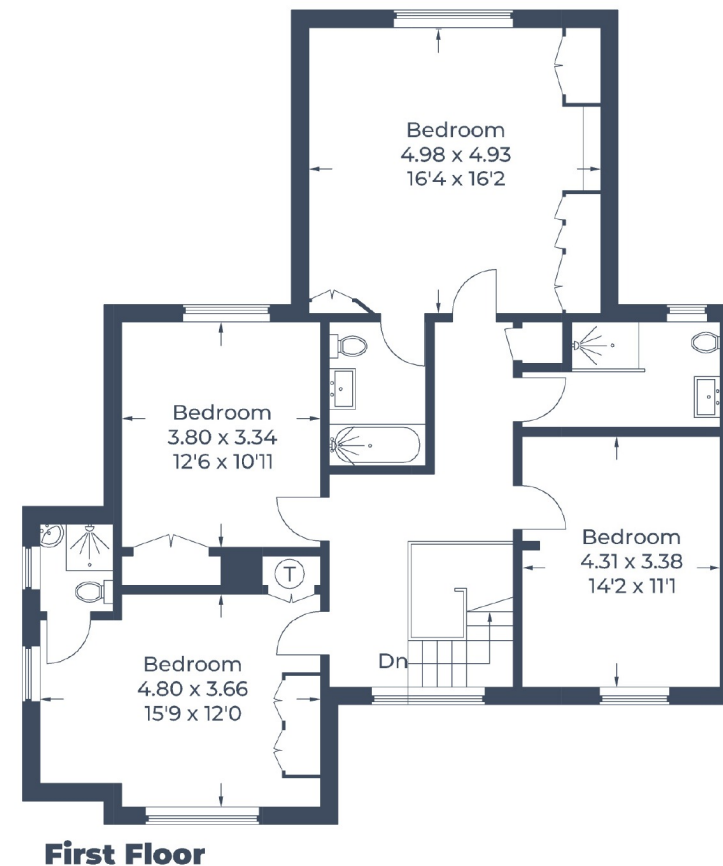
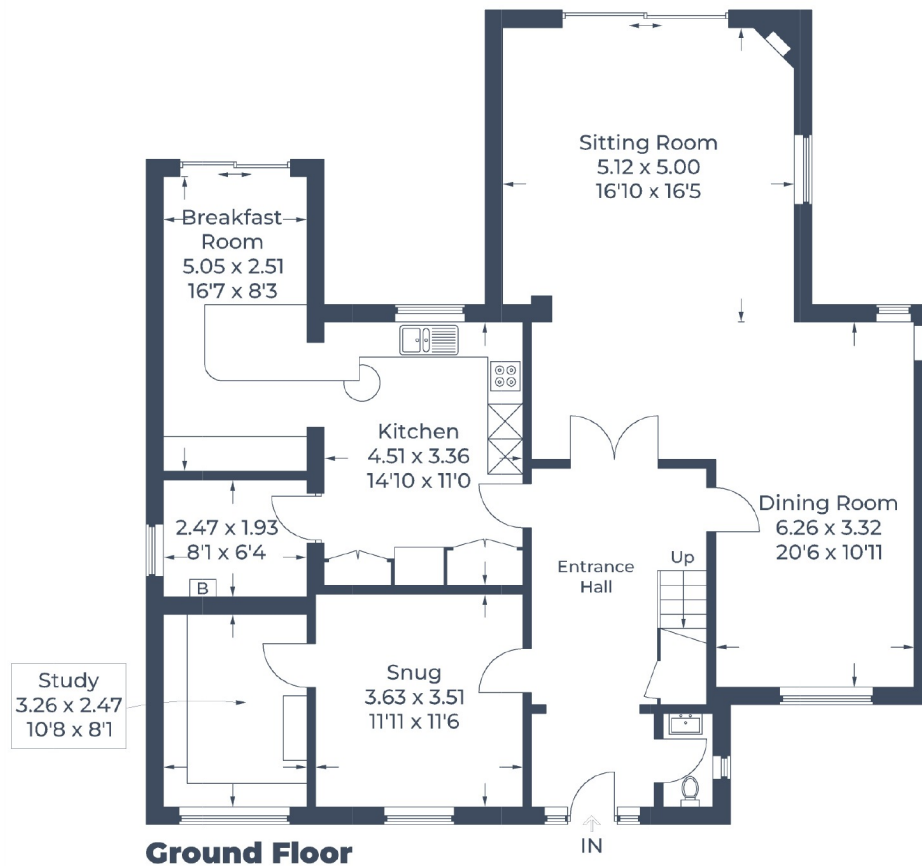


Illustration for identification purposes only,
 measurements are approximate, not to scale.
 © CJ Property Marketing Produced for EXP - Steven Rosenthal