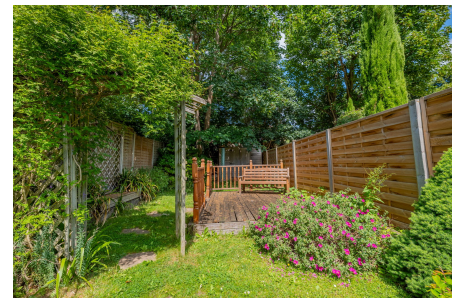


**Bromley Grove, Shortlands, BR2 0LN**

4 3 1

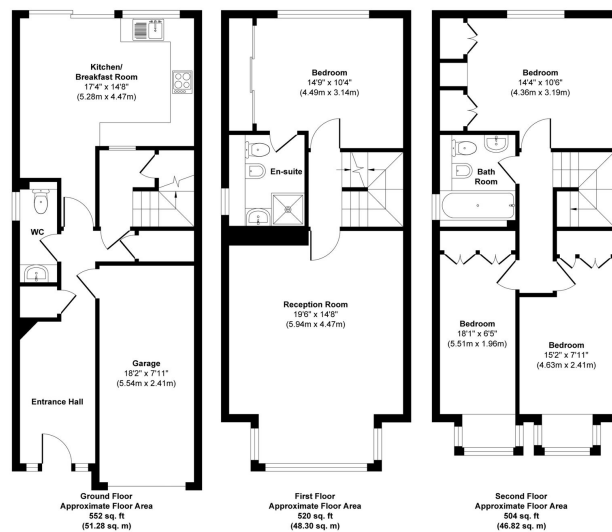


A bright and spacious four-bedroom end of terrace home in Bromley Grove, Bromley, offering versatile family living across three floors. Features include a large open-plan reception, a fully fitted kitchen, built-in wardrobes in all bedrooms, an en suite, a modern family bathroom, a garage, a driveway, and a generous rear garden with two decking areas.

## Key Features

- Please Quote RF0924 for all Enquires
- Bright and spacious reception room
- All bedrooms feature built-in wardrobes
- Family bathroom on the second floor
- Driveway & integral garage
- Four-bedroom end of terrace house in a desirable Bromley location
- Kitchen/breakfast room with access to the garden
- En suite shower room to the first-floor bedroom
- Guest WC on the ground floor
- Rear garden with large decking area, lawn, and private decked seating area at the end

Bromley Grove, Bromley, BR2 0LN



Approx. Gross Internal Floor Area 1576 sq. ft / 146.40 sq. m (Including Garage)  
Illustration for identification purposes only, measurements are approximate, not to scale.  
 Produced by Elements Property