



STEVEN ROSENTHAL

exp[®] UK

@ steven.rosenthal@exp.uk.com

🌐 stevenrosenthal.exp.uk.com

☎ 07884 131 817

60 Bois Lane, Amersham, Buckinghamshire, HP6 6BX

A spacious and well presented four bedroom semi-detached family home situated in the heart of the highly sought after village of Chesham Bois.

- Superb four bedroom semi-detached house
- Two spacious reception rooms
- Modern fitted kitchen
- Contemporary family bathroom
- Driveway parking and garage
- Short distance to Amersham town centre and station
- Close to Chesham Bois and Elangeni Primary Schools
- Chain Free
- Potential to extend further S.T.P.P
- Immaculate accommodation throughout

A superb four-bedroom semi-detached family home located in the highly desirable Chilterns village of Chesham Bois. Offering spacious and immaculately presented accommodation, this property presents a fantastic opportunity for a family to move straight in and start enjoying their new home. The ground floor comprises a welcoming entrance hall, two generously sized reception rooms, an inner hallway, a cloakroom, and a modern fitted kitchen. Upstairs, the first-floor landing leads to four bright and well-proportioned bedrooms and family bathroom. Externally, the home boasts a charming, neatly manicured rear garden, driveway parking, and a garage. The property is offered with no onward chain. Early enquiries are strongly recommended to avoid disappointment.



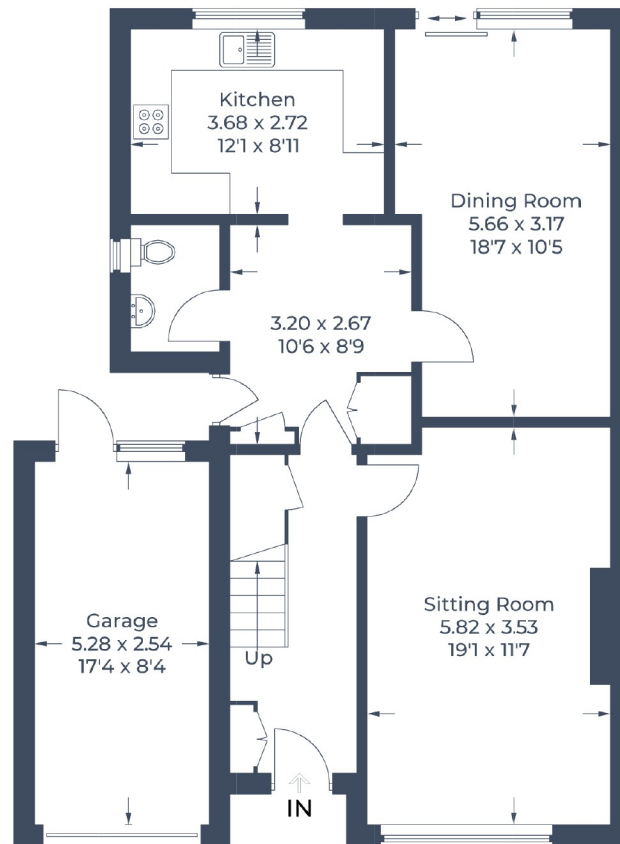


Chesham Bois is a charming Chilterns village with a beautiful church (St. Leonard's), a lovely common, and ancient woodland to explore. The village also has a small parade of shops including a convenience store, cycle shop, and an award-winning butcher. Highly regarded primary schools, Chesham Bois C of E and Elangeni, offer an excellent start for young children. Amersham Met. Line station (0.8 miles) offers a fast rail service into central London (Chiltern Rail).

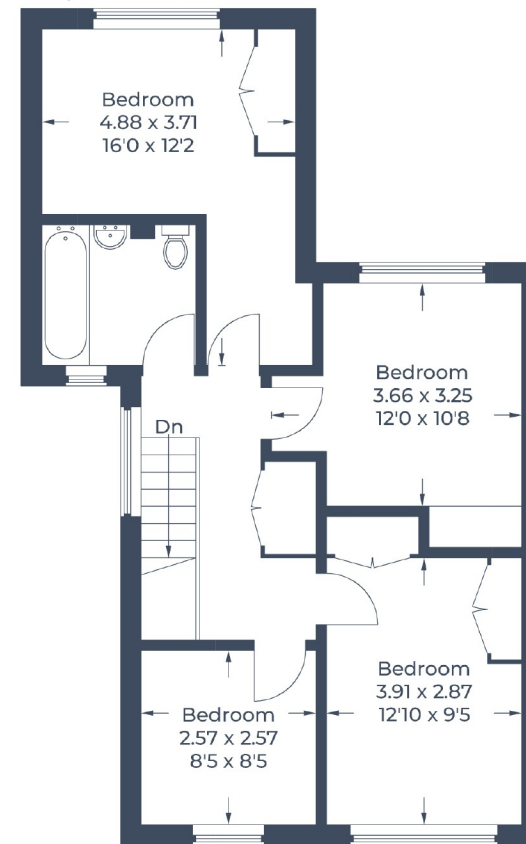
Tenure: Freehold | EPC Rating: D | Council Tax Band: F



Approximate Gross Internal Area
 Ground Floor = 70.1 sq m / 754 sq ft
 First Floor = 59.3 sq m / 638 sq ft
 Garage = 13.6 sq m / 146 sq ft
 Total = 143.0 sq m / 1,538 sq ft



Ground Floor



First Floor

Illustration for identification purposes only,
 measurements are approximate, not to scale.

© CJ Property Marketing Produced for EXP STEVE ROSENTHAL