



WAYNE DIGGINS

exp<sup>®</sup> UK

@ wayne.diggins@exp.uk.com

waynediggins.exp.uk.com

07715 925 332

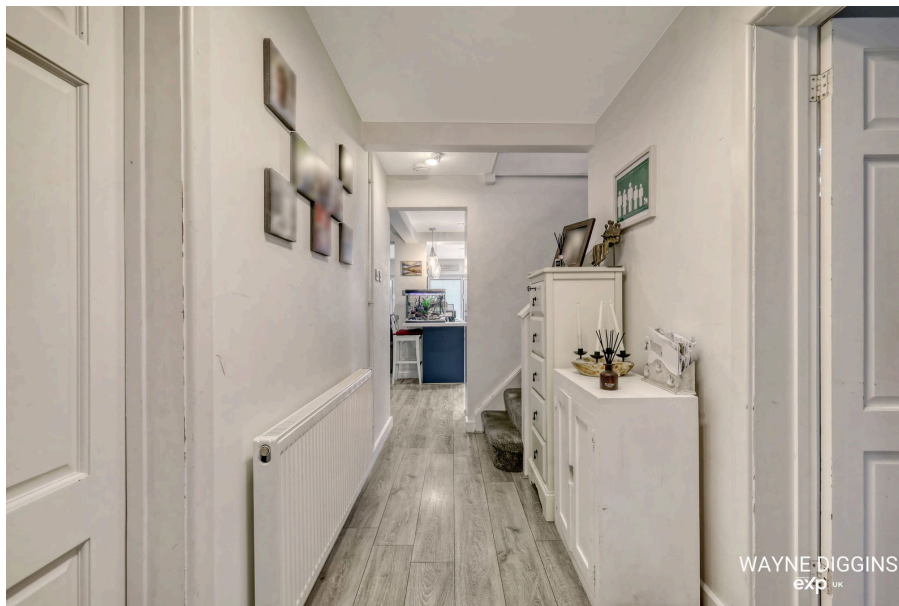


## Godman Road, Grays, RM16 4SP

Offers Over £510,000

4 1 1

- Ref: WD1273
- Open-Plan Lounge/Kitchen/Diner
- Modern, Fully Fitted Kitchen
- Four Spacious Bedrooms,
- Private, Landscaped Rear Garden
- Private Driveway
- Reception room/play room
- cloakroom
- close to shops, schools & other amenities
- Early viewing advised

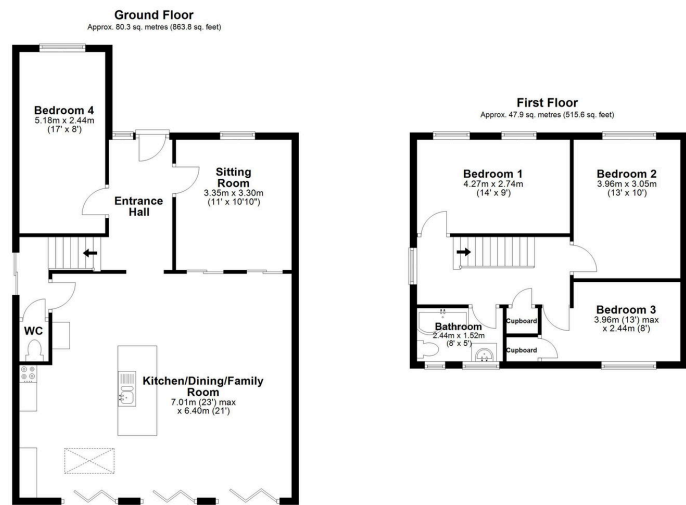


Ref: WD1273 - ARE YOU LOOKING FOR THE PERFECT FAMILY HOME... LOOK NO FURTHER!!! Introducing this beautifully presented 4-bedroom semi-detached house located on Godman Road. This charming property offers a perfect blend of contemporary living and classic features, providing ample space for growing families and those who love to entertain. The heart of the home is the stunning open-plan lounge, kitchen, and dining area, designed to create a seamless flow for modern living. The spacious layout is perfect for family life and entertaining guests. Bi-fold doors lead out to the private rear garden, allowing natural light to flood the space and creating a wonderful indoor-outdoor living experience. The well-appointed kitchen area features sleek countertops, integrated appliances, and plenty of storage, making it an ideal space for cooking and socializing with friends and family, not to mention an additional reception room/playroom.









Total area: approx. 128.1 sq. metres (1379.4 sq. feet)

This floor plan has been created by a third party and should be used as a general outline for guidance only. Any areas, measurements or distances quoted are approximate and any intending purchaser or lessee should satisfy themselves by inspection, searches, enquiries and/or full survey as to the correctness of each statement. We accept no responsibility or liability for any loss whatsoever that may arise as a result of this plan and the information contained within.

© @modaprogram / www.modaprogram.co.uk  
Plan produced using PlanOz

Godman Road

