



Chaffinch Green

Lower Stondon, Henlow, Beds. SG16 6FT

CHRIS MACSWEENEY

POWERED BY
exp™ UK

www.chrismacsweeney.exp.uk.com



Chaffinch Green

Price - £625,000

A nearly new Potton Timber chalet bungalow in a secluded location in Lower Stondon – No upper chain!

Finished approximately two years ago, this fabulous detached property offers 'Tardis' like accommodation in excess of 1700 square feet over two floors, and offers terrific versatility.

Accommodation

Ground Floor

A long and welcoming entrance hall gives access to the ground floor accommodation with underfloor heating to all rooms; comprising a substantial open plan kitchen/family room with appliances, a central island unit and multiple bifolding doors to the garden - there is ample of space for a good sized dining table and further seating. In addition, there is an adjacent utility room giving side access, a snug/living room with floor length windows, a downstairs WC, and a large double bedroom with its own sizeable four piece ensuite bathroom.

First Floor

The first floor landing provides cupboard storage and gives access to a third bedroom (study) and the master bedroom suite which offers an exceptional bedroom area, an extensive dressing area and additional dressing room with fitted cupboards and a good sized ensuite shower.

Outside

The low maintenance rear garden provides a lawn, attractive shrub borders and a large patio area with side access to the front. Private, enclosed parking at the front can accommodate at least six vehicles with electric gated access.

MEASUREMENTS

GROUND FLOOR

ENTRANCE HALL – 31'3 in length (9.53m)

SNUG/LIVING ROOM – 13'4 x 12'0 (4.06m x 3.66m) Maximum

KITCHEN/FAMILY ROOM - 20'2 x 19'0 (6.15m x 5.79m)

UTILITY ROOM 9'10 x 5'3 (3.01m x 1.59m)

BEDROOM TWO 13'11 X 10'9 (4.24m x 3.28m)

ENSUITE - 12'0 x 6'2 (3.66m x 1.88m) Max

FIRST FLOOR

BEDROOM ONE 16'2 x 12'8 (4.93m x 3.86m)

ENSUITE – 10'9 x 6'2 (3.28m x 1.88m)

DRESSING AREA – 14'6 x 5'0 (4.42m x 1.52m)

DRESSING ROOM – 9'1 x 5'0 (2.77m x 1.52m)

BEDROOM THREE/STUDY – 11'3 x 7'5 (3.43m x 2.26m) – Restricted headroom

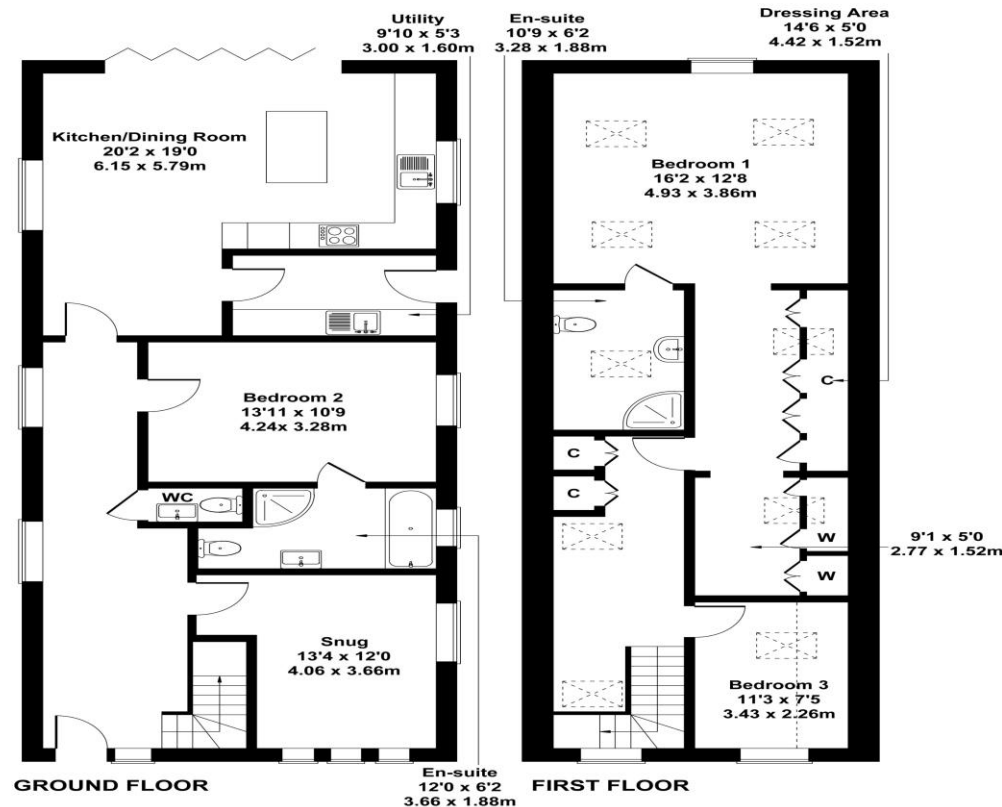


Call Chris MacSweeney to arrange a viewing on 07468 48 88 18

FLOORPLAN

Chaffinch Green Lower Stondon

Approximate Gross Internal Area
1726 sq ft - 160 sq m



Not to Scale. Produced by The Plan Portal 2025
For Illustrative Purposes Only.



Score	Energy rating	Current	Potential
92+	A		
81-91	B	84 B	91 B
69-80	C		
55-68	D		
39-54	E		
21-38	F		
1-20	G		

Tel: 07468 48 88 18

Email: chris.macsweeney@exp.uk.com

www.chrismacsweeney.exp.uk.com

CHRIS MACSWEENEY

POWERED BY
exp UK

IMPORTANT: we would like to inform prospective purchasers that these sales particulars have been prepared as a general guide only. A detailed survey has not been carried out, nor the services, appliances and fittings tested. Room sizes should not be relied upon for furnishing purposes and are approximate. If floor plans are included, they are for guidance only and illustration purposes only and may not be to scale. If there are any important matters likely to affect your decision to buy, please contact us before viewing the property.