



LINDSAY McRAE

exp<sup>®</sup> UK

@ lindsay.mcrae@exp.uk.com

🌐 lindsaymcrae.exp.uk.com

📞 07971 796 225



High Street South, Northchurch, Berkhamsted, HP4 3QT  
Offers Over £975,000

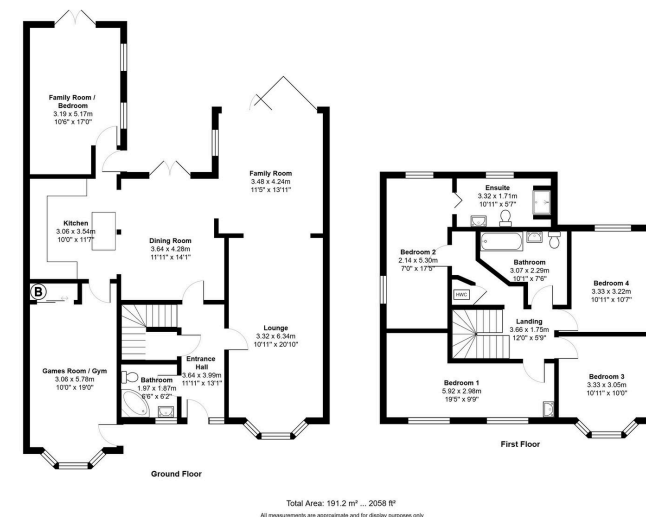
🛏 4 🍳 3 🚗 3





- Reference: BM 0526
- 4 or 5 BEDROOM DETACHED HOUSE of 2000 square feet
- 4 Reception Rooms, 4 or 5 Bedrooms & 3 Bathrooms
- Driveway for 2/3 Vehicles
- New 'Ideal' Gas boiler fitted in Oct 2024
- Spacious & Flexible Accommodation with centralised Kitchen Area
- Mature Private Rear Gardens with a Southerly Aspect
- 14ft Refitted Kitchen with a Range of Eye & Base Level Units
- Easy Access to the sought St Mary's Primary School
- No Sales Chain





Ref: BM:0526. Welcome to Your Dream Home! A STUNNING 4 or 5 BEDROOM 3 BATHROOM DETACHED EXECUTIVE HOUSE - ideal for the growing FAMILY & located just behind the High Street & an easy drive into Berkhamsted's vibrant High Street, just minutes away from the excellent schools & only 15 minutes walk away from APSLEY TRAIN STATION (into London Euston). Local attractions include; the Art Deco cinema, the Grand Union canal with its waterside pubs, restaurants & boats. the splendid open spaces of the Ashridge Estate & many nearby gold courses. Features include the 22ft Lounge, 14ft Kitchen, 16ft Home Office/Bedroom 5, 18ft Gym, 14ft Family Room, MODERN style BATHROOMS, 4 DOUBLE BEDROOMS, & finally the OPEN PLAN KITCHEN. This stylish Home offers FLEXIBLE LIVING ACCOMMODATION, & also offers the potential to create an ANNEXE so don't delay, book your VIEWING NOW. NO SALES

