

Ravensmead Road

3 1 1

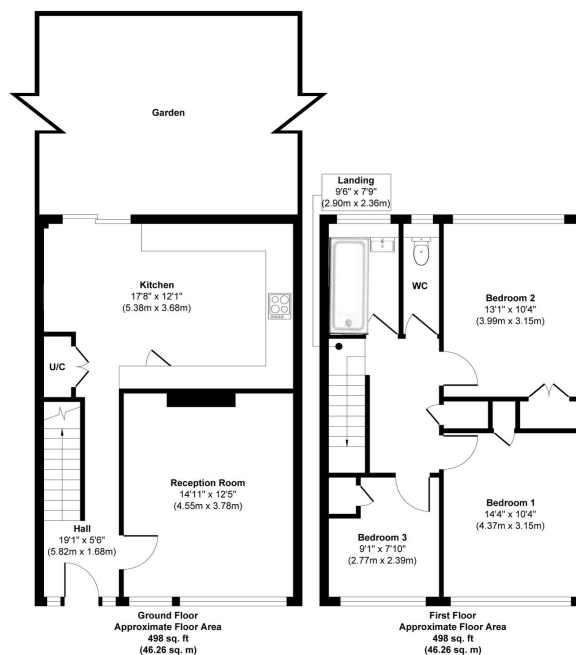


A bright and well-proportioned three-bedroom terraced house in a convenient Bromley location. With a spacious reception room, a light-filled kitchen with sliding doors, and both front and rear gardens, this home offers great potential for families or first-time buyers. Close to local schools, parks, and transport links.

Key Features

- Book a viewing today
- Spacious kitchen/diner with large sliding doors
- Two double bedrooms and one single bedroom
- Well-kept front garden offering privacy from the road
- Convenient location close to schools, shops, and Bromley South Station
- Three-bedroom terraced house
- Bright reception room with generous proportions
- Good-sized rear garden with patio area
- Approx. 996 sq. ft. of internal living space
- Please Quote RF0924 for all Enquires

Ravensmead Road BR2



Approx. Gross Internal Floor Area 996 sq. ft / 92.52 sq. m
Illustration for identification purposes only, measurements are approximate, not to scale.
Produced by Elements Property