

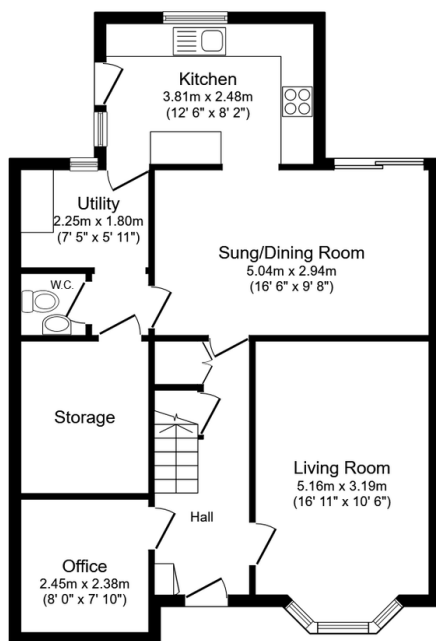
26 The Pippins, Meopham

£650,000

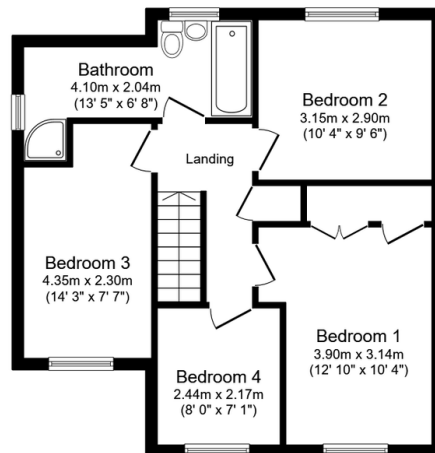
4 2 2



- 4 Bedroom Extended Detached house
- Immaculate throughout
- Walking distance of Meopham Community Academy and local shops
- Summer house in the garden
- Quiet cul de sac location
- Open plan kitchen dining area
- 3 Double bedrooms and a Single bedroom
- Spacious rear garden
- Walking distance to Meopham train station
- Quote reference N01232



Ground Floor
Floor area 71.0 sq.m. (764 sq.ft.)



First Floor
Floor area 53.3 sq.m. (574 sq.ft.)

Total floor area: 124.3 sq.m. (1,338 sq.ft.)

This floor plan is for illustrative purposes only. It is not drawn to scale. Any measurements, floor areas (including any total floor area), openings and orientations are approximate. No details are guaranteed, they cannot be relied upon for any purpose and do not form any part of any agreement. No liability is taken for any error, omission or misstatement. A party must rely upon its own inspection(s). Powered by www.Propertybox.io


Guide price £650,000 - £700,000


Take a look at this beautiful extended detached family home situated in the heart of the popular Meopham village. Modernised throughout you will be able to move straight in and start enjoying what life has to offer you in this sought after village. Walking distance to schools, shops and train station everything you could want is literally in walking distance.

NICK OAKLEY



@ nick.oakley@exp.uk.com

 nickoakley.exp.uk.com

 07368 552 274

Quote N01232 to book viewing