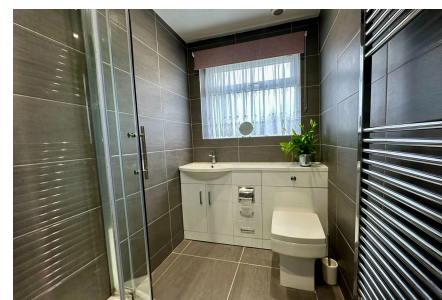


## Newitt Road, Hoo, Rochester, ME3 9ES

Guide Price £400,000

3 1 2

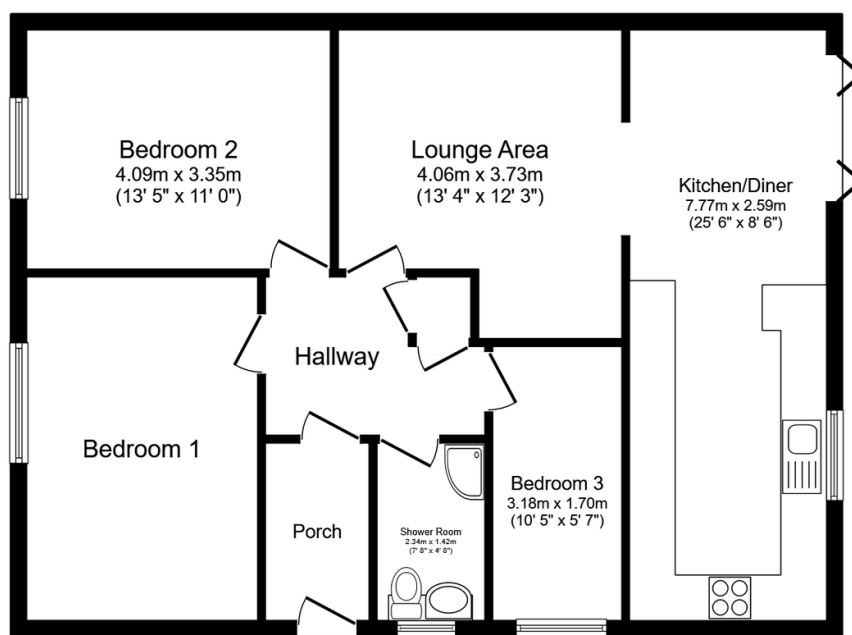


A beautiful example of what a bungalow lifestyle can offer! Renovated to a high standard 6 years ago this home offers spacious living areas, great sized bedrooms all situated on a corner plot position. There's plenty of extras including a garage and driveway, contemporary shower room and stunning kitchen with built in appliances.

QUOTE REF AP0490

## Key Features

- 3 Bedroom Semi Detached Bungalow
- Spacious Bedrooms
- Corner Plot Position
- Contemporary Decoration Throughout
- Tenure Freehold / Council Tax Band D
- Stunning Kitchen/Dining Room With Bifolding Doors
- Garage & Driveway
- Walking Distance To Village High Street
- Near To Doctors & Bus Stop
- QUOTE REF AP0490



**Floor Plan**

Floor area 81.8 sq.m. (880 sq.ft.)

Total floor area: 81.8 sq.m. (880 sq.ft.)

This floor plan is for illustrative purposes only. It is not drawn to scale. Any measurements, floor areas (including any total floor area), openings and orientations are approximate. No details are guaranteed, they cannot be relied upon for any purpose and do not form any part of any agreement. No liability is taken for any error, omission or misstatement. A party must rely upon its own inspection(s). Powered by [www.Propertybox.io](http://www.Propertybox.io)