



LE-ANNE COLEMAN POWERED BY **exp** TM UK

@ [leanne.coleman@exp.uk.com](mailto:leanne.coleman@exp.uk.com)

[leannecoleman.exp.uk.com](https://www.leannecoleman.exp.uk.com)

07967 032 978



Holborough Lakes, Snodland, ME6 5FQ

£600,000

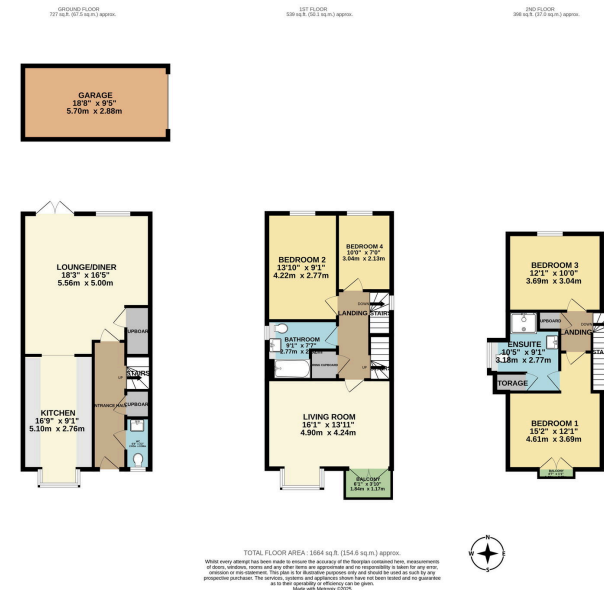
🛏 4 🚿 2 🛋 2





- Immaculate Four Bedroom Family Home
- Luxury Interiors and High Quality Finish
- Sumptuous Accommodation
- Low Maintenance All-Weather Surface Garden
- Residents Gym, Dive school, Trim Trails and Open Spaces
- Sought After Holborough Lakes Development Location
- Premium Position with Stunning Lakeside Views
- Family Bathroom, En-Suite and Guest WC
- Garage and Two Parking Spaces
- Please quote LC0941 when you call to schedule a viewing.





An immaculately presented four-bedroom family residence – The Petworth by Berkeley Homes – boasting a beautifully landscaped garden, private garage, and two dedicated parking spaces with electric vehicle charging point, enviably positioned within the prestigious Holborough Lakes development. This exceptional home enjoys panoramic lakeside views and exclusive access to a wealth of first-class on-site amenities, creating an idyllic lifestyle opportunity in one of the area’s most desirable settings.

Please quote LC0941 when you call to schedule a viewing.

