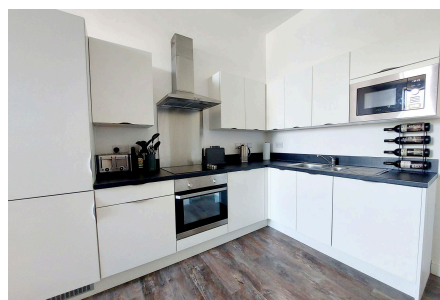
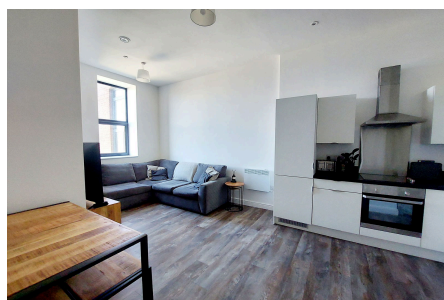


St Bartholomews place, 112 Bishops Court, New Road,

Guide Price £190,000 - £200,000

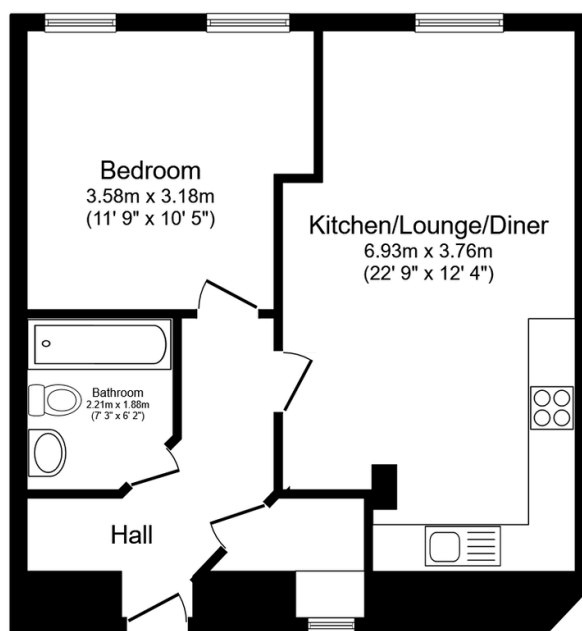
1 bed 1 bath 1 sofa



CALL TO BOOK YOUR VIEWING! Guide £190,000 - £200,000. Pick up your keys and move straight into this contemporary 1 bed apartment in the heart of Rochester. You have the added benefit of an allocated parking space and roof terrace with views perfect for the summer months or to enjoy the fireworks! There is Lift access and the building is wheelchair friendly. Offered for sale with **NO CHAIN**. Give us a call to book your appointment to view QUOTE AP0490.

Key Features

- 1 Bedroom Modern Apartment With Parking Space
- Immaculate Condition Throughout
- Communal Roof Terrace With Views
- Walking Distance to Rochester and Chatham Train Station
- Tenure Leasehold/Council Tax band B
- Open Plan Lounge/Kitchen/Diner
- Wheelchair Friendly With Lift Access
- NO CHAIN
- Easy Access To Town Centre And Bus Routes
- QUOTE AP0490



Floor Plan

Floor area 52.8 sq.m. (569 sq.ft.)

Total floor area: 52.8 sq.m. (569 sq.ft.)

This floor plan is for illustrative purposes only. It is not drawn to scale. Any measurements, floor areas (including any total floor area), openings and orientations are approximate. No details are guaranteed, they cannot be relied upon for any purpose and do not form any part of any agreement. No liability is taken for any error, omission or misstatement. A party must rely upon its own inspection(s). Powered by www.Propertybox.io