



NICOLA LANGFORD

exp<sup>®</sup> UK

@ nicola.langford@exp.uk.com

🌐 nicolalangford.exp.uk.com

☎ 07396 394 255



## 29 Kingswear Drive, Broughton

Fixed Price £63,000

🛏 2 🚿 1 🛋 1

- 30% SHARED OWNERSHIP
- NO PREMIUM
- TWO BEDROOMS
- OPEN PLAN LIVING
- FAMILY BATHROOM
- GROUND FLOOR
- ALLOCATED PARKING
- PROPERTY REFERENCE NL1208
- Rent £355.06 pcm
- Service Charge £93.57 pcm



Two Bedroom Ground Floor Apartment On 30% Shared Ownership Scheme With NO Premium. (Property Reference NL1208)

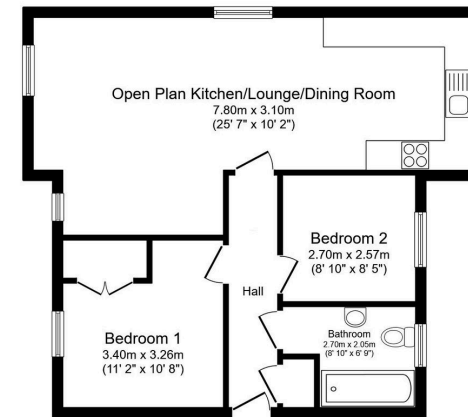
**A fantastic opportunity to step onto the property ladder with this modern two-bedroom ground floor flat, available at 30% shared ownership with Guinness Housing, located in the ever-popular Broughton area of Milton Keynes.**

This well-maintained home offers a bright and spacious open-plan kitchen/living/dining area, with four large windows allowing in an abundance of natural light. The kitchen is modern and practical – ideal for entertaining or everyday use.

There are two generously sized double bedrooms and a sleek, family-style bathroom. Externally, the property benefits from allocated parking directly outside, offering added convenience.







Floor Plan  
Floor area 62.3 sq.m. (670 sq.ft.)

Total floor area: 62.3 sq.m. (670 sq.ft.)

This floor plan is for illustrative purposes only. It is not drawn to scale. Any measurements, floor areas (including any total floor area), openings and orientations are approximate. No details are guaranteed, they cannot be relied upon for any purpose and do not form any part of any agreement. No liability is taken for any error, omission or misstatement. A party must rely upon its own inspection(s). Powered by [www.propertybox.io](http://www.propertybox.io)

## Energy rating and score

This property's energy rating is C. It has the potential to be C.

[See how to improve this property's energy efficiency.](#)

Score	Energy rating	Current	Potential
92+	A		
81-91	B		
69-80	C	79 C	79 C
55-68	D		
39-54	E		
21-38	F		
1-20	G		

The graph shows this property's current and potential energy rating.