

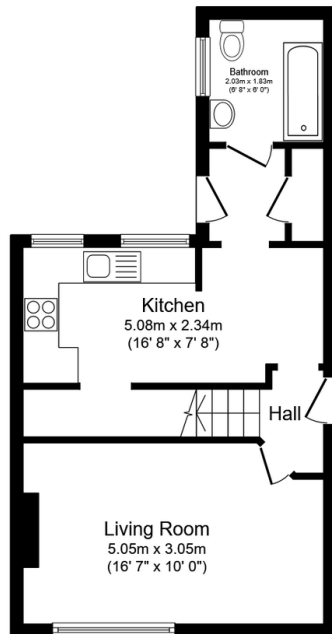
47 Watchgate,

£350,000

2 1 1

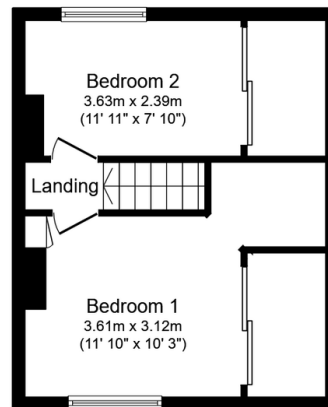


- QUOTE REF NO1232
- 2 Bedroom end of terrace house
- Off street parking to the rear
- Kitchen breakfast room
- Downstairs bathroom
- Amazing views across the fields
- Spacious rear garden
- Walking distance to shops
- 10 minute drive from Dartford town
- Close by to A2 and M25 motorways



Ground Floor

Floor area 39.3 sq.m. (423 sq.ft.)



First Floor

Floor area 31.9 sq.m. (344 sq.ft.)

Total floor area: 71.3 sq.m. (767 sq.ft.)

This floor plan is for illustrative purposes only. It is not drawn to scale. Any measurements, floor areas (including any total floor area), openings and orientations are approximate. No details are guaranteed, they cannot be relied upon for any purpose and do not form any part of any agreement. No liability is taken for any error, omission or misstatement. A party must rely upon its own inspection(s). Powered by www.Propertybox.io

QUOTE REF N01232

Take a look at this immaculate end of terraced house that is ideal for first time buyers looking to move straight in. There is ample enclosed parking at the rear for several cars. Take in the stunning country side views from the front garden, whilst only being a 5 minute walk to the local CO-OP where you can get all of your essential shopping.