



Guy Gibson Court | Kings Hill | West Malling | ME19 4LJ

FOR SALE  2  2  947 SQFT

STUART REYNOLDS

expTM UK



THE PROPERTY

Introducing Guy Gibson Court, a private gated community and stunning collection of 16 luxury apartments designed in 2004 by the renowned Sunley Group, a name that has been synonymous with real estate developments across the UK and globally for 70 years where forward thinking developments with innovation in architecture and interiors are key themes.

Being sold with a share of the freehold, this beautiful first floor apartment is presented in impeccable condition. Approached by a private gated entrance in a woodland setting, there is ample parking and a single garage located on site. Once inside the spacious entrance foyer, choose between the wonderful winding staircase or the lift to access the first floor where just under 1,000 square feet of living space await inside number 6.

The private hallway sets the tone from the moment you step inside and you won't be left feeling disappointed by what you find. A wonderful living room adjoins the bespoke fitted kitchen making this an excellent area to host friends and guests. There are two excellent sized double bedrooms with the primary enjoying private bathroom facilities plus there is a separate fitted bathroom off the hallway. What makes this particular apartment special is the wrap around balcony which spans from the living room to the principle bedroom with a lovely view across the communal grounds. The location of this home puts all the daily essentials on your doorstep where a short walk will take you to Liberty Square, where you can choose between three supermarkets and will also find a great selection of independent shops that can cater for most needs plus a local pub for socialising with friends. Liberty Square also plays home to essential community services which include a GP, dentist and pharmacy. Kings Hill's extensive facilities and amenities are unparalleled, including exceptional sports and leisure options. Convenient travel links, with junction 4 of the M20 and junction 2A of the M26 only 2.6 and 4.1 miles away, respectively. For commuters, West Malling Rail Station provides access to London Bridge, London Victoria and Charing Cross.



Entrance

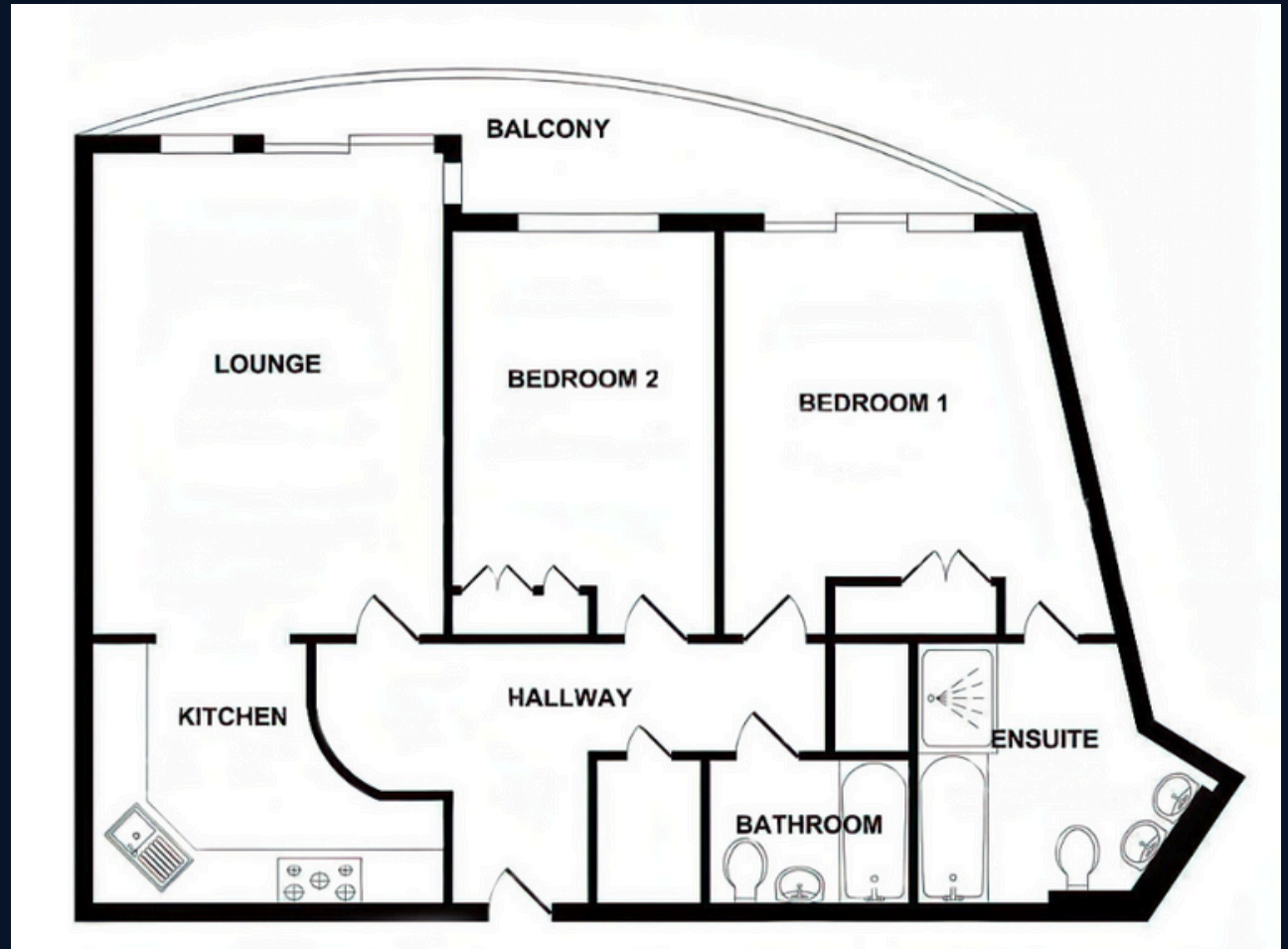
Gated Entrance
Communal Foyer With Stairs & Lift
Access First Floor

Accommodation

Private Entrance Hall
Living Room - 17'6 x 12'11
Kitchen - 12'11 max x 9'5
Master Bedroom - 13'7 max x 13'3
increasing to wardrobe depth of 15'1
Ensuite Bathroom
Bedroom2 - 12'9 increasing to
wardrobe depth of 14'7 x 9'6
Bathroom

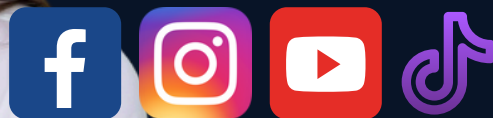
Exterior

Sit Out Balcony
Spacious Garage





01732 647009



@sreynoldsrealestate