

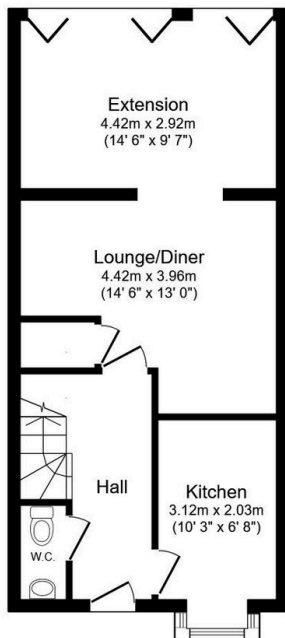
30 Martin Drive, Stone

Guide Price £475,000

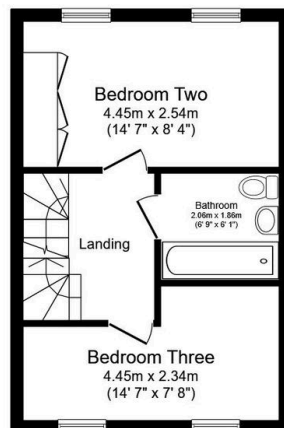
3 2 2



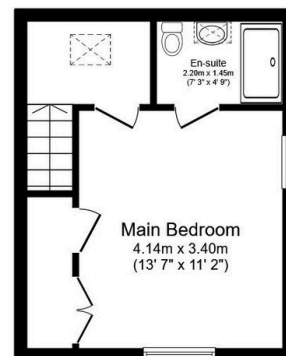
- QUOTE REF NO1232
- Extended living space
- Tandem parking driveway
- Excellent car and train commuter links
- En suite to main bedroom
- 3 Bedroom Extended semi detached town house
- Spacious rear garden
- Situated on a sought after development
- Modern Kitchen
- Immaculately presented



Ground Floor
Floor area 45.3 sq.m. (488 sq.ft.)



First Floor
Floor area 30.9 sq.m. (332 sq.ft.)



Second Floor
Floor area 25.3 sq.m. (273 sq.ft.)

Total floor area: 101.5 sq.m. (1,093 sq.ft.)

This floor plan is for illustrative purposes only. It is not drawn to scale. Any measurements, floor areas (including any total floor area), openings and orientations are approximate. No details are guaranteed, they cannot be relied upon for any purpose and do not form any part of any agreement. No liability is taken for any error, omission or misstatement. A party must rely upon its own inspection(s). Powered by www.Propertybox.io

QUOTE REF N01232

Modern three bedroom extended semi detached townhouse on one of Dartford's most sought after developments. The lounge has been extended to create fantastic entertaining space. The garden is a great size compared to others on the development, as well as having a patio area where you can visualise hosting epic BBQ's. Close by to schools and transport links.