



The Chain, Sandwich, CT13 9BJ

Guide Price £340,000

DOMINIC MURPHY POWERED BY exp TM UK

@ dominic.murphy@exp.uk.com

🌐 dominicmurphy.exp.uk.com

☎ 01304 746 016



## The Chain, Sandwich, CT13 9BJ

An endearing Grade II period cottage located in the heart of Sandwich! **Please quote ref DM0223 when enquiring.**

**Internally** - Dating back to the 17th Century in a road of historic interest, this mid-terrace home offers surprisingly spacious accommodation with a good-sized entrance hall with doors into the front remodelled modern kitchen and although compact and bijoux, has plenty of worktop and cupboard space, a nice additional feature is the window seat that looks out of the newly installed sash window at the front. From the hall is the large lounge/dining room at the rear, which comes complete with a log burning stove for maximum comfort, and the large rear window lets plenty of light flood in and has a door out to the generous size low maintenance landscaped gardens.

On the first floor, a smart updated bathroom and there are two generous double bedrooms, the master being the larger of the two and located at the rear. The second bedroom at the front gives access to a staircase that takes you to the part boarded loft.

This beautiful period home will surely suit a variety of purchasers from those wanting a second home, a possible holiday let/Airbnb or simply those wishing to enjoy the glorious Sandwich lifestyle that awaits.











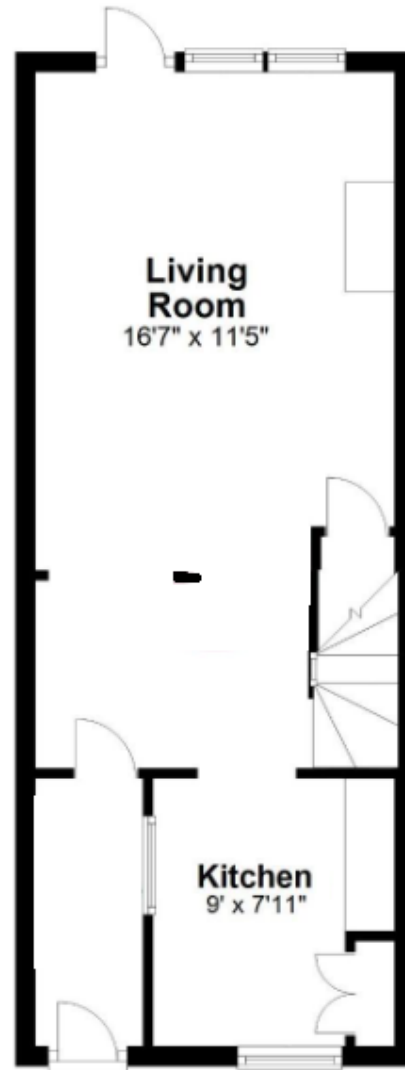






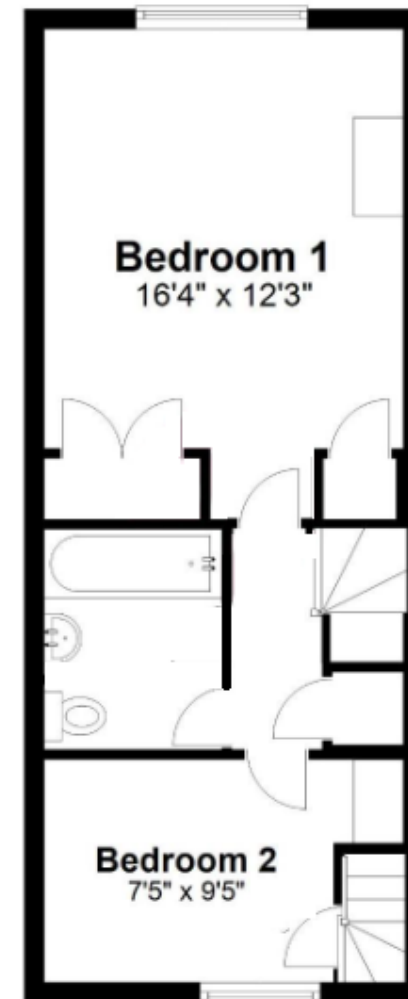
## Ground Floor

Approx. 387.0 sq. feet



## First Floor

Approx. 383.9 sq. feet



Total area: approx. 770.9 sq. feet

Please note that floorplans and design may vary and are for illustrative purposes only.  
Plan produced using PlanUp.

eXp World UK Ltd is a registered company at Level 37, 25 Canada Square, London, E14 5LQ.

Registered company number is 12016573. VAT Registration Number is 327 4120 29