

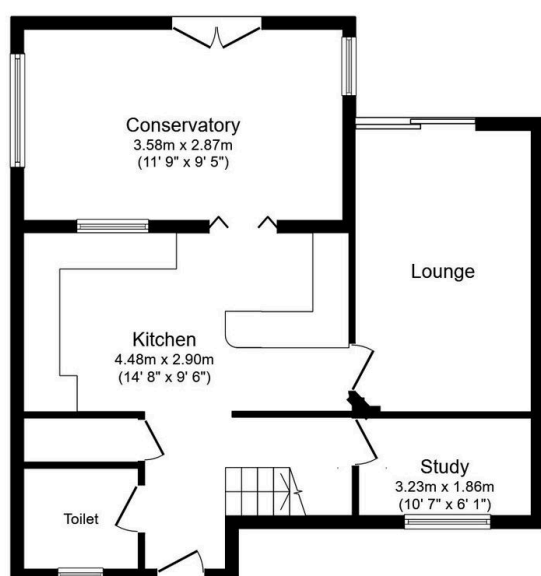
73 Manor Forstal New Ash Green

Guide Price £425,000

3 1 1

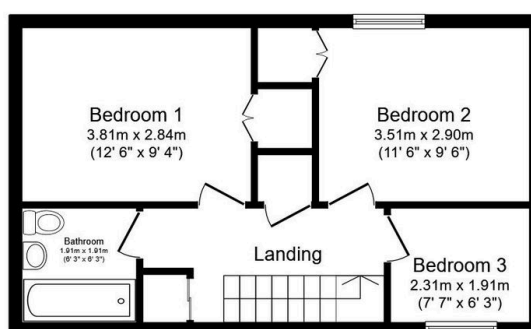


- QUOTE REF NO1232
- 3 Bedroom end of terrace house
- Modern Kitchen
- Downstairs toilet
- Garage accessible from the garden
- Conservatory
- Communal parking area
- Walking distance of village shops
- Study
- Large garden



Ground Floor

Floor area 65.7 sq.m. (707 sq.ft.)



First Floor

Floor area 41.3 sq.m. (445 sq.ft.)

Total floor area: 107.0 sq.m. (1,152 sq.ft.)

This floor plan is for illustrative purposes only. It is not drawn to scale. Any measurements, floor areas (including any total floor area), openings and orientations are approximate. No details are guaranteed, they cannot be relied upon for any purpose and do not form any part of any agreement. No liability is taken for any error, omission or misstatement. A party must rely upon its own inspection(s). Powered by www.Propertybox.io

QUOTE REF NO1232

Guide price £425,000. Take a look at this immaculate 3 bedroom end of terrace house located in the popular village of New Ash Green. The home is spacious throughout and recently renovated including the stunning kitchen. The garage is accessible from the rear garden making this unique to others on the development. You could quite simply move straight in.