

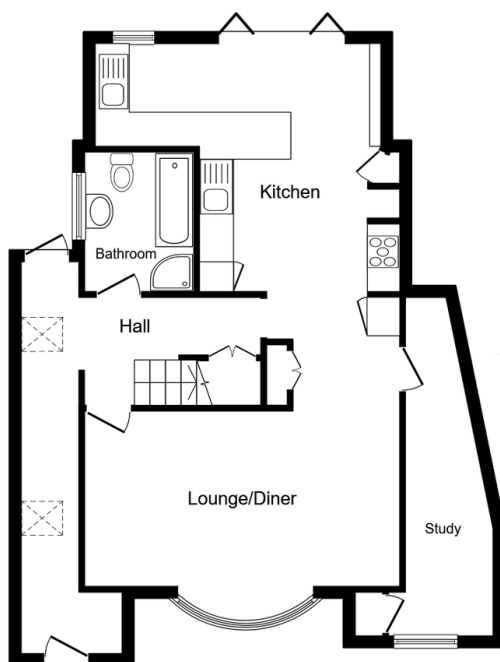
## 2 Arcadia Road, Istead Rise

£600,000

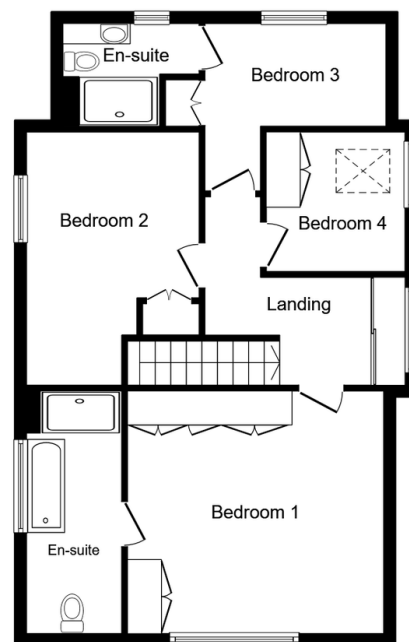
4 3 2



- QUOTE REF NO1232
- 4 Bedroom Detached house
- Stunning open plan kitchen
- Driveway for several cars
- 2 en suite shower rooms
- Study
- Excellent primary school nearby
- Walking distance to shops
- 15 minutes from Bluewater shopping centre
- Garage



Ground Floor



First Floor

This floor plan is for illustrative purposes only. It is not drawn to scale. Any measurements, floor areas (including any total floor area), openings and orientations are approximate. No details are guaranteed, they cannot be relied upon for any purpose and do not form any part of any agreement. No liability is taken for any error, omission or misstatement. A party must rely upon its own inspection(s). Powered by [www.Propertybox.io](http://www.Propertybox.io)


## QUOTE REF NO1232


Take a look at this stunning 4 bedroom detached home situated in the sought after village of Istead Rise. You are treated to some impressive views of the Kent countryside as you pull up and start to imagine what life living here is like. Only a short walk away from the village shops as

NICK OAKLEY



@ [nick.oakley@exp.uk.com](mailto:nick.oakley@exp.uk.com)

 [nickoakley.exp.uk.com](http://nickoakley.exp.uk.com)

 07368 552 274

well as nearby Gravesend town only a 10 minute drive away. There is an excellent primary school close by, making it ideal for those families looking for the peace and quiet of a village.