

**Fisher Street, Maidstone, ME14 2SU**

Guide Price £250,000

🛏 2 🚿 1 🛋 1



- REF MB1202
- Price Range £250,000 - £265,000
- Flexible living space—perfect for families, professionals, or those working from home
- Low running costs—affordable and efficient
- Quiet spot, just minutes from a lively town centre with shops, restaurants, and entertainment
- Only a short walk to the train station—ideal for commuters
- Private rear garden with a sun-trapped seating area
- Cosy lounge with a charming fireplace
- Spacious and versatile accommodation spread over three floors
- Spacious feeling rooms, lots of character





### 30 Fisher Street Maidstone Kent ME14 2SU

Approximate Gross Internal Floor Area = 75.0 sq m / 807 sq ft

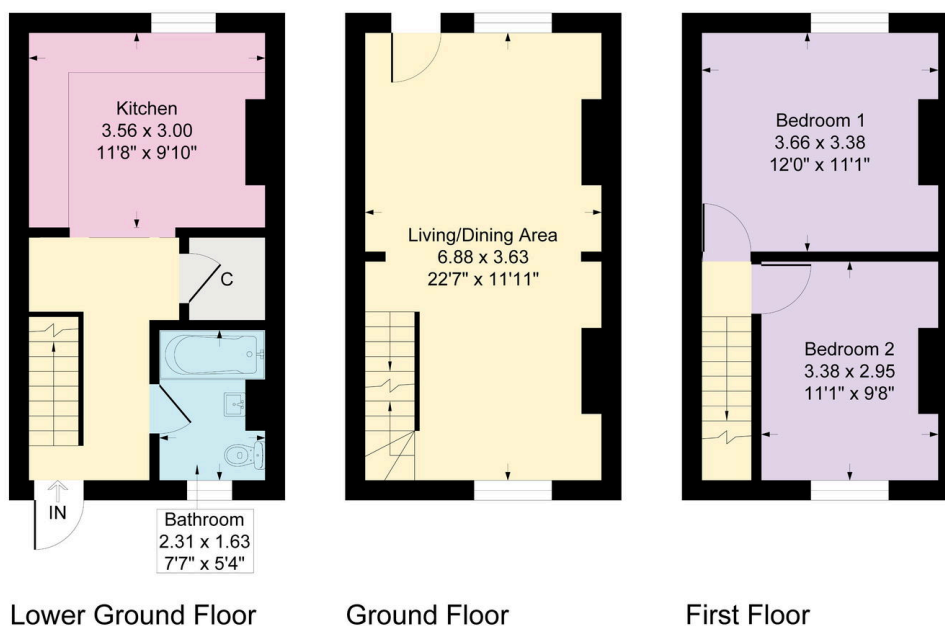


Illustration for identification purposes only, measurements are approximate, not to scale.

Arranged over three inviting floors, this delightful character property, located in a quiet spot in the heart of the town centre, the house offers the perfect blend of period charm and modern convenience.