

Park Lane, Birchington

£375,000

2 2 4

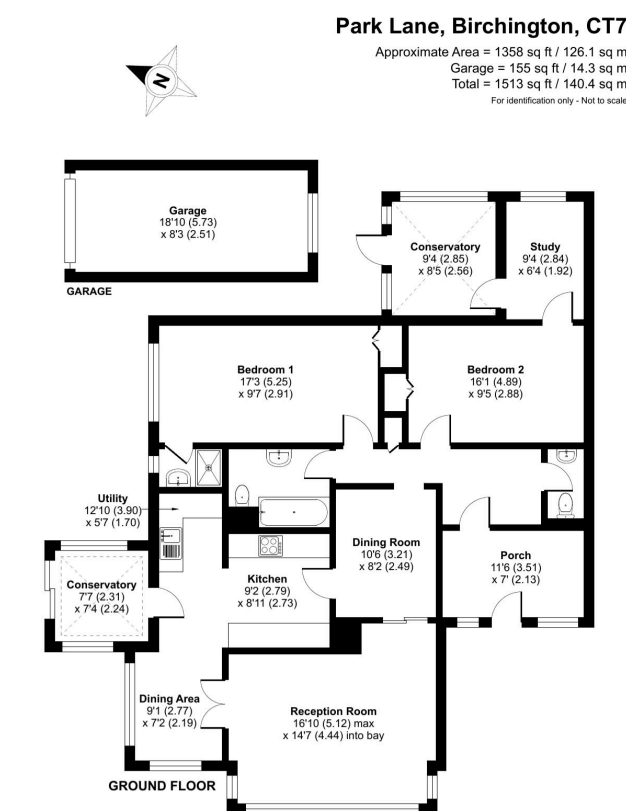


A spacious detached bungalow situated on a corner plot in a highly desirable location, less than 500 metres from Birchington Square.

The generous accommodation totals 1358 sq. ft. (126 sq. m) and is arranged to provide an entrance porch, hall, sitting room with doors leading to a dining area, kitchen, two double bedrooms, the main bedroom benefiting from an en-suite shower room, a study, two conservatories, a bathroom, and a separate cloakroom. The property would now benefit from a programme of refurbishment, and there is scope to remodel or extend the existing accommodation (subject to obtaining all necessary consents and approvals).

Key Features

- Please Quote Ref JJ1194
- Situated on a Corner Plot
- Sitting Room
- Conservatory
- Garage & Driveway
- Spacious Detached Bungalow
- 2 Double Bedrooms
- Study
- Scope to Remodel or Extend The Existing Accommodation
- No Chain



Floor plan produced in accordance with RICS Property Measurement 2nd Edition, incorporating International Property Measurement Standards (IPMS2 Residential). © richcom 2025. Produced for Joe Jezzard (EXP). REF: 126959