

Gordon Terrace, Rochester, ME1 1SB

Guide Price £375,000

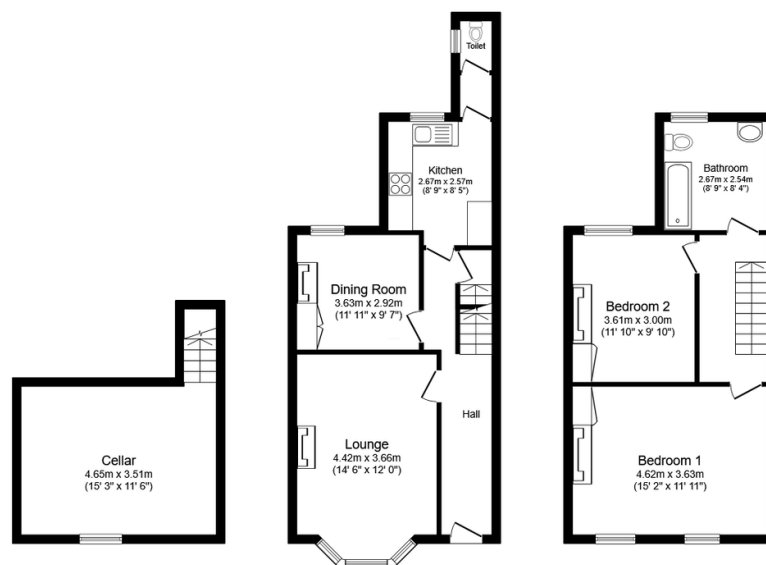
2 1 2



Guide Price £375,000 - £400,00. Two bedroom Victorian terrace home with cellar. Evening walks admiring historical monuments and sunsets glistening against the water are what's in store for the owner of this home set in a highly sought after road within Rochester. It offers spacious rooms and character features, with potential for off road parking. Call to book your viewing QUOTE AP0490

Key Features

- 2 Bedroom Terraced Home
- Walking Distance To High Street
- Near to Train Station
- Close Proximity To High Performing Schools
- Handy Downstairs Cloakroom & Upstairs Bathroom
- Cellar Room With Potential
- Spacious Garden Area With Potential For Off Road Parking
- Highly Sought After Location
- Tenure - Freehold / Council Tax Band C
- QUOTE AP0490



Cellar
Floor area 18.8 sq.m.
(203 sq.ft.)

Ground Floor
Floor area 45.0 sq.m.
(485 sq.ft.)

First Floor
Floor area 42.1 sq.m.
(453 sq.ft.)

TOTAL: 105.9 sq.m. (1,140 sq.ft.)

This floor plan is for illustrative purposes only. It is not drawn to scale. Any measurements, floor areas (including any total floor area), openings and orientations are approximate. No details are guaranteed, they cannot be relied upon for any purpose and do not form any part of any agreement. No liability is taken for any error, omission or misstatement. A party must rely upon its own inspection(s). Powered by www.Propertybox.io