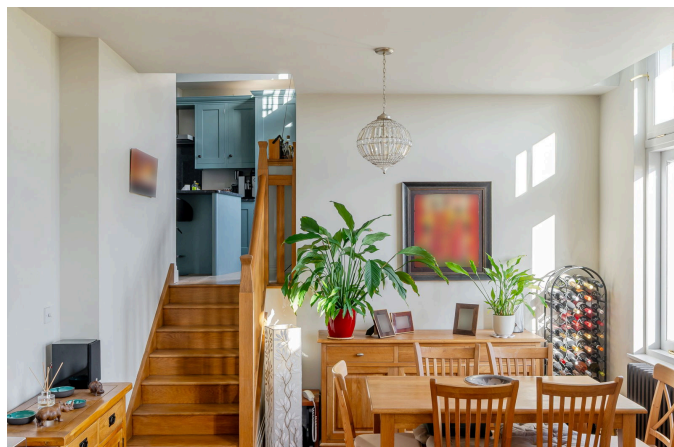


Kings Drive, 94 King Edward VII Apartments,
Coming Soon £675,000 OIRO

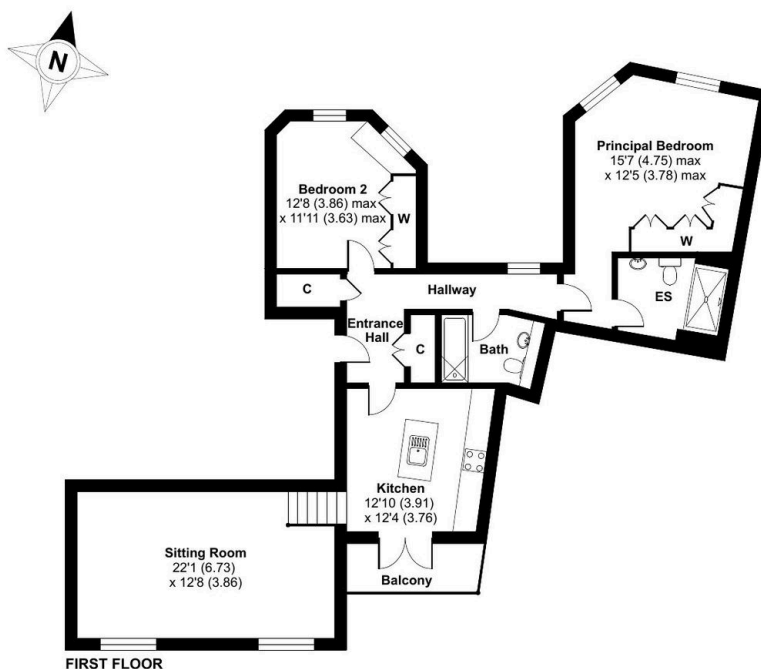
🛏 2 🚿 2 🛋 1



- Stunning views over gardens & woodlands
- Spacious High Specification Kitchen with Island
- Bespoke fitted wardrobes to both bedrooms
- Edwardian Feature lead light windows
- Access to residents pool, spa steam room & gym
- South facing private terrace balcony
- Open plan living/dining area
- Concierge service & two residents lounges
- Luxury tiled en-suite to principal bedroom
- Two allocated garage parking spaces & EV Charging point

King Edward VII Apartments, Kings Drive, Midhurst, GU29

Approximate Area = 1064 sq ft / 98.8 sq m
For identification only - Not to scale



Floor plan produced in accordance with RICS Property Measurement 2nd Edition, Incorporating International Property Measurement Standards (IPMS2 Residential). © nñchecon 2025. Produced for Alison McCarey Ltd powered by exp. REF: 1253796

Stunning characterful two bedroom apartment with south facing private terrace balcony and two secure car parking spaces.

A Superbly located luxury apartment offering spacious living & dining areas with french doors opening out onto private balcony with gorgeous views of the listed gardens and South Downs beyond.

There are two double bedrooms both with fitted wardrobes, lead light windows and pretty views of the internal gardens. The wonderfully spacious principal bedroom features a tiled en suite shower room with premium fittings. The second double bedroom enjoys plenty of light, fitted wardrobes and there is an adjacent tiled bathroom.

The thoughtfully designed kitchen offers a generous quartz worktops, hand crafted bespoke cabinetry and premium integrated appliances, french doors open out to the private external terrace perfect for relaxing, eating and enjoying the scenery.

There is a utility/cloakroom.