


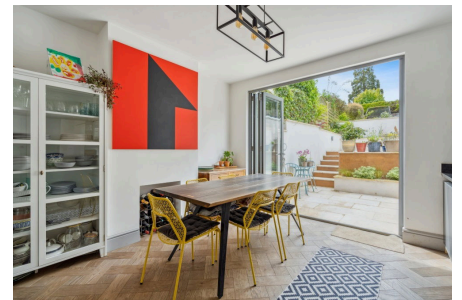


## Lower Road, Chorleywood

Guide Price £850,000

 4  2  1



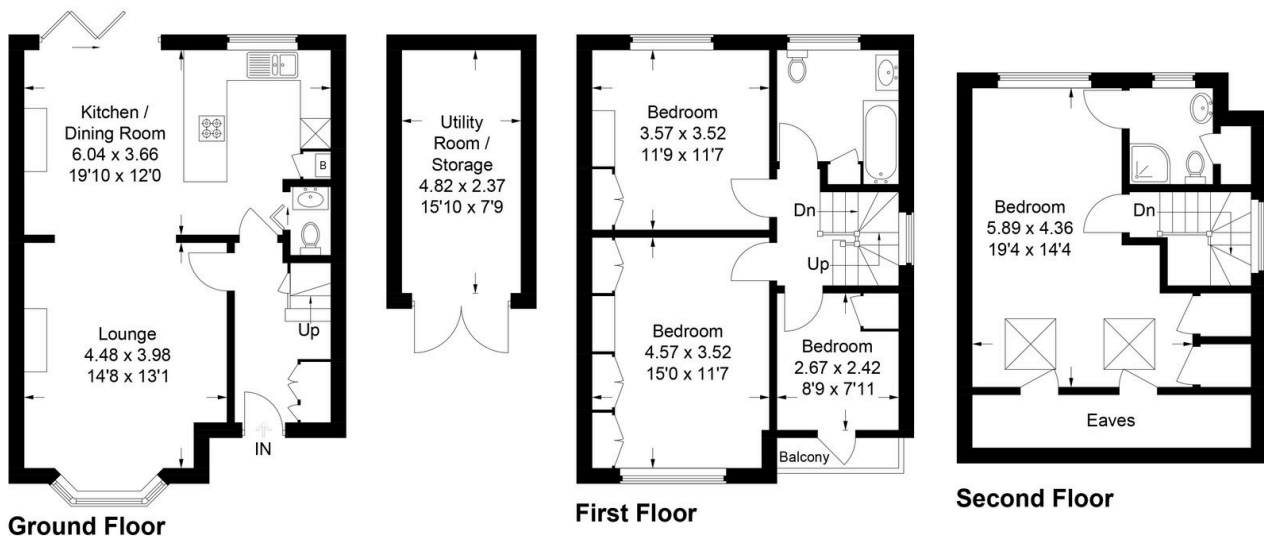
A stylish 4 bedroom home in the centre of Chorleywood

\*\*\* PLEASE QUOTE REF KW0404\*\*\*

## Key Features

- 4 Bedrooms
- Immaculate condition
- Contemporary fitted kitchen
- 2 Bathrooms
- Landscaped garden
- Walking distance to Chorleywood Village
- Close too excellent schools
- Ideally located to transport links to London
- \*\*\* PLEASE QUOTE REF KW0404\*\*\*
- 

Approximate Gross Internal Area  
Ground Floor (Including Utility Room / Storage) = 59.2 sq m / 637 sq ft  
First Floor = 47.7 sq m / 514 sq ft  
Second Floor = 39.0 sq m / 419 sq ft  
Total = 145.9 sq m / 1,570 sq ft



This plan is for layout guidance only. Not drawn to scale unless stated. Windows and door openings are approximate. Whilst every care is taken in the preparation of this plan, please check all dimensions, shapes and compass bearings before making any decisions reliant upon them.  
© CJ Property Marketing Ltd